

WP513 Waterproofing Planter Box - Concrete / Blockwork (SBS Torch Applied)

Preparation:

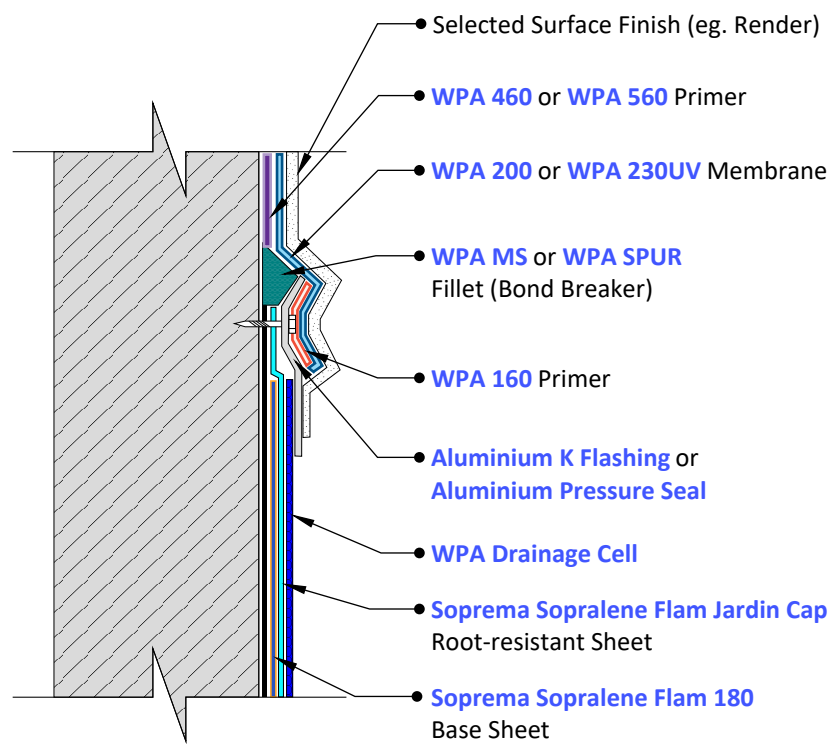
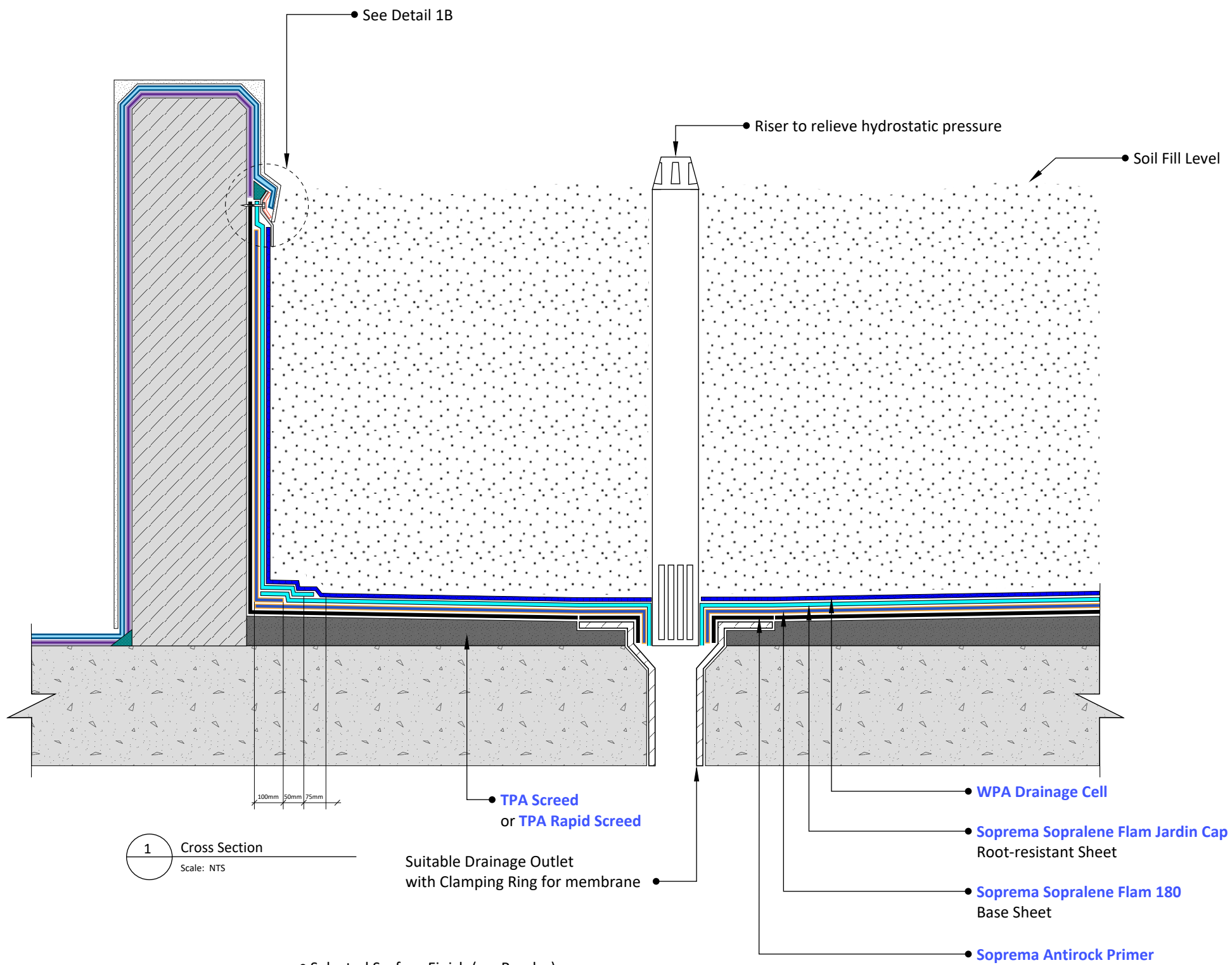
1. All surfaces to be waterproofed must be firm, clean, dry, sound and smooth. All grease, oil, wax, curing compounds, loose material, paint and any other contaminants must be removed, masonry surfaces must be pointed flush and surface defects repaired. New concrete must be cured for a minimum of 28 days.
2. External corners to be waterproofed must be bevelled to ensure a smooth transition of membrane from vertical to horizontal surfaces.

Installation:

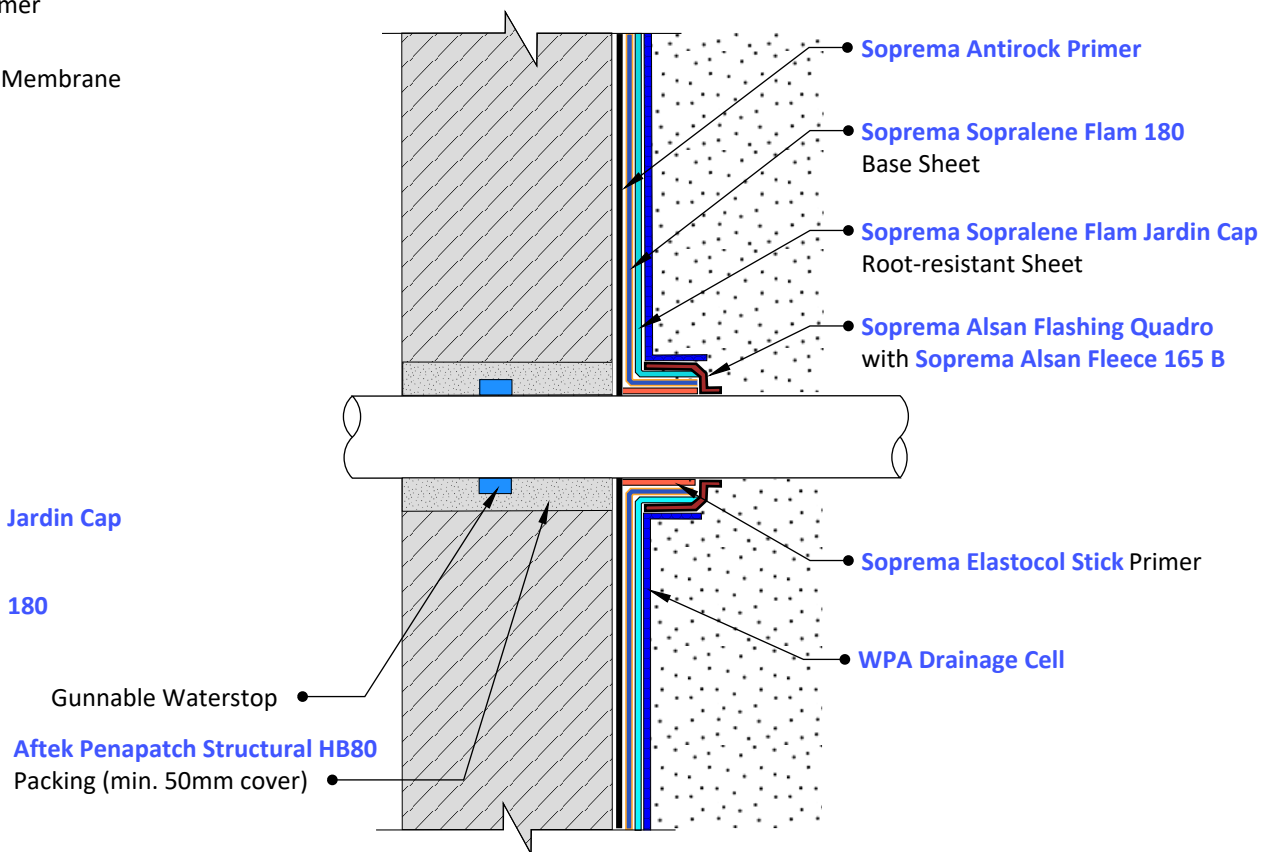
NOTE: NEVER TORCH DIRECTLY TO COMBUSTIBLE SUBSTRATES, ALWAYS ADHERE TO LOCAL BUILDING FIRE REGULATIONS.

1. Waterproofing installation shall be in accordance with AS 4654.2 Waterproofing Membranes for External Above-Ground Use.
2. Repair all surface defects with [Aftek Penapatch Structural HB80](#).
[Aftek Penapatch Structural HB80](#) is a high strength; high build shrinkage compensated structural repair mortar.
3. Install a Gunnable Waterstop around all penetrations. The waterstop must be packed in between at least a 50mm cover of [Aftek Penapatch Structural HB80](#).
Gunnable waterstop products are caulk grade, single component swelling pastes used to stop water infiltration through concrete construction joints.
4. Install [TPA Screed](#) or [TPA Rapid Screed](#) to achieve appropriate falls to waste. Where a bonded screed is required, apply bond coat using [TPA 401M](#) or [TPA Lite](#).
[TPA Screed](#) is a pre-blended screed mixture for the installation of cementitious screeds and tile beds, suitable for internal and external floor applications.
[TPA Rapid Screed](#) is a pre-blended, rapid set, engineered screed mixture for the installation of cementitious screeds and tile beds, suitable for internal and external floor applications.
5. Apply [Soprema Antirock Primer](#) to the substrate being waterproofed.
[Soprema Antirock Primer](#) is a blend of SBS modified bitumen, fast-evaporating solvents and adhesive enhancing additives. It is used to prime concrete and metal surfaces to improve the adhesion of Soprema bituminous torch-on membranes.
6. Install Soprema [Soprema Sopralene Flam 180](#) base sheet membrane once primer has dried.
[Soprema Sopralene Flam 180](#) is a SBS-modified bitumen waterproofing membrane, reinforced with an ultra-high strength, non-woven polyester providing excellent puncture resistance, covered with a thermofusible plastic film.
7. Install Soprema [Soprema Sopralene Flam Jardin Cap](#) root-resistant cap sheet membrane.
[Soprema Sopralene Flam Jardin Cap](#) is a flexible SBS elastomeric bitumen waterproofing membrane with a non-woven polyester reinforcement, containing anti-root penetration properties.
8. Detail all penetrations with [Soprema Alsan Flashing Quadro](#) incorporating [Soprema Soprema Alsan Fleece 165 B](#), ensuring complete encapsulation of the reinforcing fleece.
[Soprema Alsan Flashing Quadro](#) is a single-component, root and rhizome resistant polyurethane resin used for flameless waterproofing junctions between horizontal surfaces, up-stands and various roof details.
[Soprema Alsan Fleece 165 B](#) is a non-woven polyester fleece specially designed to be used as reinforcement and ensures that a minimum layer thickness of the Alsan Flashing Quadro waterproofing resin.
9. Install [Aluminium K Flashing](#) or [Aluminium Pressure Seal](#) with appropriate mechanical fixings to protect the exposed membrane edge at the top of the wall. Seal the top of the pressure seal with [WPA MS](#) or [WPA SPUR](#).
[Aluminium K Flashing](#) is an extruded aluminium flashing with pre-punched holes, designed for the top termination of sheet membrane systems.
[Aluminium Pressure Seal](#) is designed to seal the top edge of sheet membrane systems.
[WPA MS](#) is a single component, moisture cured silane modified hybrid sealant.
[WPA SPUR](#) is a high quality, professional, universal, low modulus sealant based on hybrid technology.
10. Prime [Aluminium K Flashing](#) or [Aluminium Pressure Seal](#) using [WPA 160](#) primer.
[WPA 160](#) is a specialised solvent free primer designed for enhancing the adhesion of subsequent membranes, adhesives, toppings and decorative finishes over non-porous substrates.
11. Apply [WPA 460](#) or [WPA 560](#) primer to the capping and external face of the wall above the [Aluminium K Flashing](#) or [Aluminium Pressure Seal](#).
[WPA 460](#) is a two-part, water-based epoxy primer, used to seal concrete and masonry surfaces.
[WPA 560](#) is a two-part, water-based epoxy primer, designed as a water and vapour proof coating under waterproofing membranes.
12. Apply [WPA 200](#) or [WPA 230UV](#) waterproofing membrane to the primed [Aluminium K Flashing](#) or [Aluminium Pressure Seal](#), the capping and the external face of the wall.
[WPA 200](#) is a flexible, two-part, rapid drying, cementitious waterproofing membrane system, specifically designed for use under tile, stone and exposed applications.
[WPA 230UV](#) is an elastomeric, fibre reinforced, water-based polyurethane membrane system designed for exposed or under tile applications.
13. Install [WPA Drainage Cell](#) over [Soprema Sopralene Flam Jardin Cap](#), terminating under the [Aluminium K Flashing](#) or [Aluminium Pressure Seal](#).
[WPA Drainage Cell](#) is a two-core drainage sheet consisting of a non-woven geotextile filter layer thermally welded to a water impermeable, recycled HDPE (High Density Polyethylene) drainage membrane.
14. Install internally filtered riser for the purpose of relieving hydrostatic pressure.

DISCLAIMER: The technical and application information given in this Bayset Pty Ltd publication, is intended for trade professionals and informed users, but is general information only. All information is based on the present state of our best scientific and practical knowledge, and every effort has been made to ensure its accuracy. Bayset Pty Ltd is only the distributor of this product. This publication, and any statements by our employees, officers and agents, does not replace the user's evaluation and judgment as to the suitability or use and application of the product, and we take no responsibility and accept no liability for any loss, damage, cost or expense. Any oral or written suggestions, including field service, do not constitute advice as to the suitability of products for their intended use, supervisory responsibility or advice on the users specific circumstances.



1 Pressure Seal Transition
Scale: NTS



3 Pipe Penetration
Scale: NTS

© COPYRIGHT BAYSET PTY LTD
ANY FORM OF REPRODUCTION OF THIS DRAWING IN FULL OR IN PART WITHOUT THE WRITTEN PERMISSION OF BAYSET PTY LTD CONSTITUTES AN INFRINGEMENT OF COPYRIGHT



**Waterproofing Planter Box
- Concrete / Blockwork
(SBS Torch Applied)**

DRAWING NUMBER

WP513

SCALE: NTS

RELEASE: November 9, 2023

DRAWN BY: CS