

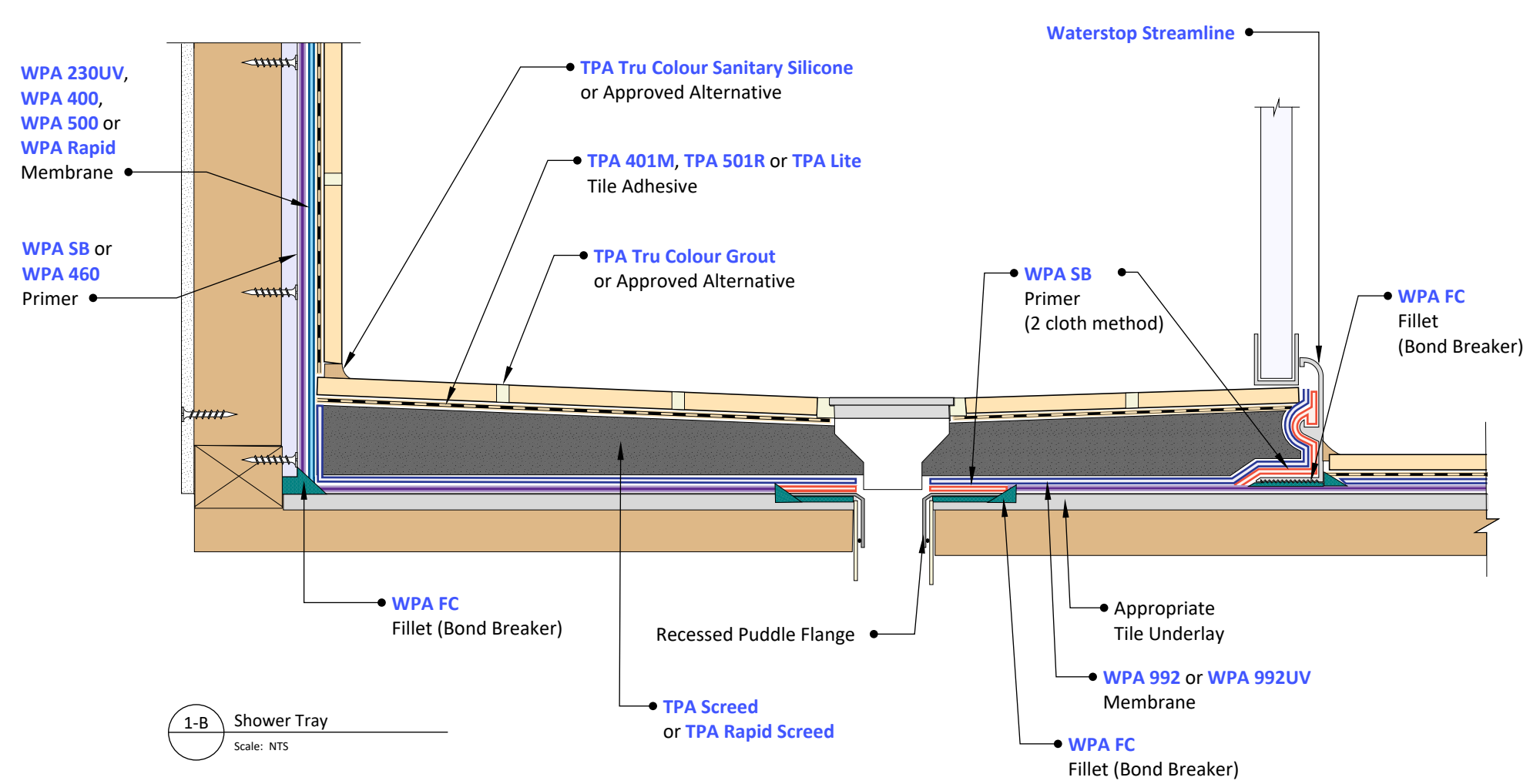
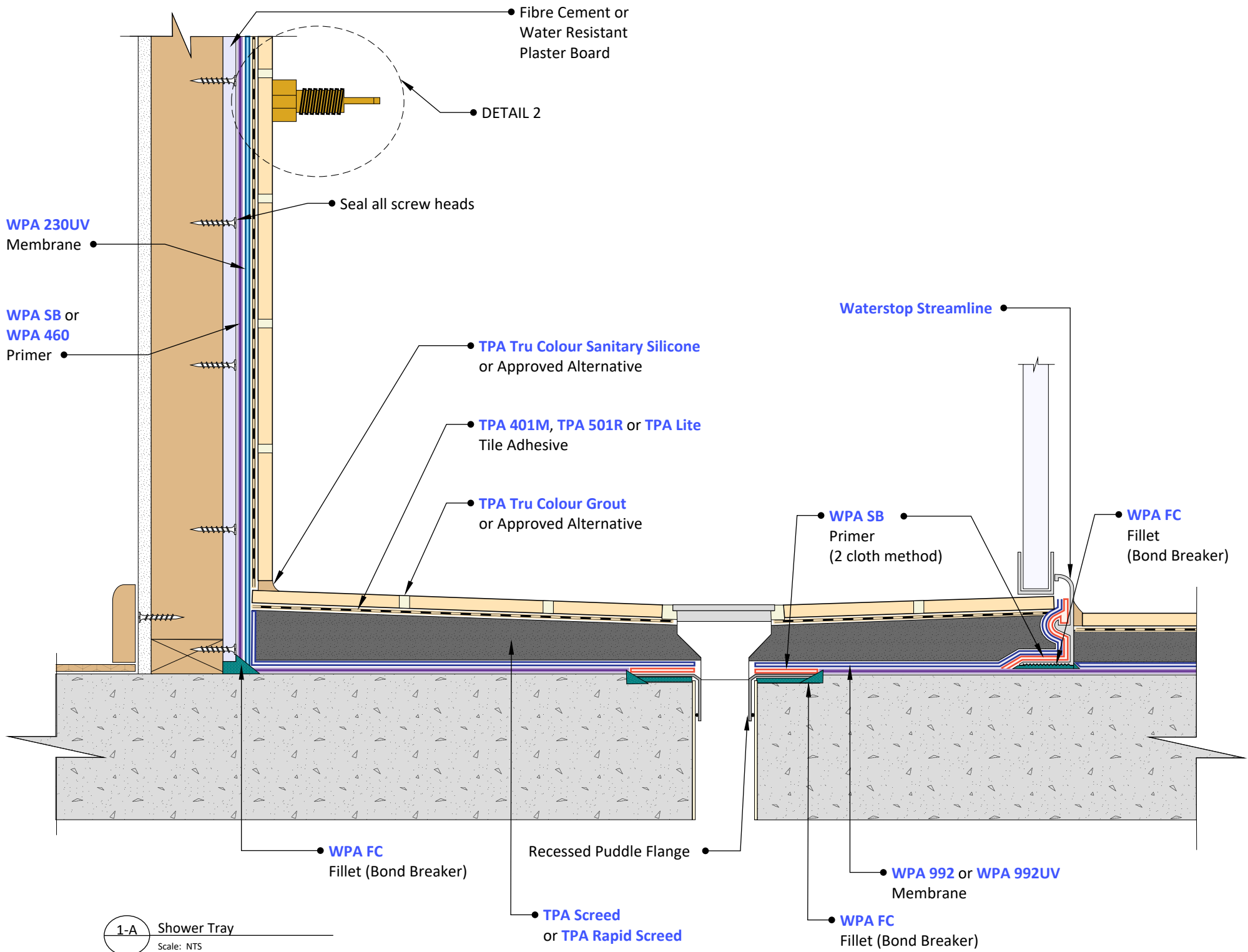
WP212 Waterproofing Wet Areas - Enclosed Shower with Waterstop Streamline (under screed)

Preparation:

1. All surfaces to be waterproofed must be firm, clean, dry, sound and smooth. All grease, oil, wax, curing compounds, loose material, paint and any other contaminants must be removed, masonry surfaces must be pointed flush and surface defects repaired. New concrete must be cured for a minimum of 28 days.
2. External corners to be waterproofed must be bevelled to ensure a smooth transition of membrane from vertical to horizontal surfaces.

Installation:

1. Waterproofing installation shall be in accordance with AS 3740 Waterproofing of Domestic Wet Areas.
Tile installation shall be in accordance with AS 3958.1 Ceramic Tiles - Guide to the Installation of Ceramic Tiles.
2. Install a puddle flange to all waste pipes, ensuring that puddle flanges are recessed into the substrate.
3. Install **Waterstop Streamline** to perimeter of shower and at door opening.
4. Install an appropriate fillet (bond breaker) to all transitions using **WPA FC**.
WPA FC is a high performance, fast cure, one component polyurethane sealant.
5. Apply **WPA SB** primer to some non-porous surfaces such as puddle flange and waterstop angle using the 2 cloth method. (The 2 cloth method is carried out as follows: dampen a clean cloth with an appropriate amount of WPA SB primer, wipe evenly over the non-porous substrate utilizing a rubbing action. With a clean dry cloth, immediately remove all primer residues by implementing a buffing action).
WPA SB is a fast drying, solvent based primer, with exceptional penetrating properties. WPA SB primer is designed to assist in improving adhesion on porous and some non-porous substrates.
6. Apply **WPA SB** or **WPA 460** primer to the substrate to be waterproofed.
WPA SB is a fast drying, solvent based primer, with exceptional penetrating properties. WPA SB primer is designed to assist in improving adhesion on porous and some non-porous substrates.
WPA 460 is a two-part, water-based epoxy primer, used to seal concrete and masonry surfaces.
7. Apply **WPA 230UV** to the shower recess walls only in a minimum of two coats to achieve the required dry film thickness. Ensure that the previous coat has completely dried before applying the subsequent coat(s). **WPA 230UV** on the shower walls must be fully cured prior to the commencement of the floor membrane.
NOTE: All penetrations must be waterproofed.
WPA 230UV is an elastomeric, fibre reinforced, water-based polyurethane membrane system designed for exposed or under tile applications.
8. Apply **WPA 992** or **WPA 992UV** membrane to the floor area in a minimum of two coats to achieve the required dry film thickness. Ensure that the previous coat has completely dried before applying the subsequent coat(s). The **WPA 992** or **WPA 992UV** membrane to the floor area must be sufficiently overlapped onto the **WPA 230UV** previously applied to the walls.
WPA 992 is a thixotropic, one part, liquid applied, moisture cured polyurethane waterproofing membrane, suitable for waterproofing most non-exposed applications.
WPA 992UV is a thixotropic, one part, liquid applied, moisture cured polyurethane waterproofing membrane, suitable for waterproofing most applications.
9. Install **TPA Screed** to achieve appropriate falls to waste. Where a bonded screed is required, apply a bond coat using **TPA 401M** or **TPA Lite**.
Install **TPA Rapid Screed** for an engineered or rapid set screed, using a bond coat of **TPA Rapid** for bonded screeds.
TPA Screed is a pre-blended screed mixture for the installation of cementitious screeds and tile beds, suitable for internal and external floor applications.
TPA Rapid Screed is a pre-blended, rapid set, engineered screed mixture for the installation of cementitious screeds and tile beds, suitable for internal and external floor applications.
10. Install tiles using **TPA 401M**, **TPA 501R** or **TPA Lite** tile adhesive.
TPA 401M is a white, flexible, powdered adhesive for wall and floor applications.
TPA 501R is a cost effective, high coverage, flexible, powdered adhesive for wall and floor applications.
TPA Lite is a premium grade, white, fibre reinforced, flexible cement based tile adhesive, based on a light weight formulation.
11. Grout tiles using **TPA Tru Colour Grout** or approved alternative.
TPA Tru Colour Grout is a high-performance stain & efflorescence resistant grout. It is designed for use with most types of Ceramic, Mosaic, Natural Stone and Glass Tiles.
12. Install backing rod to all perimeter and intermediate movement joints and seal with **TPA Tru Colour Sanitary Silicone** or approved alternative.
TPA Tru Colour Sanitary Silicone is a mould resistant, non-diluted, high performance, UV resistant, neutral cure silicone sealant.



© COPYRIGHT BAYSET PTY LTD

ANY FORM OF REPRODUCTION OF THIS DRAWING IN FULL OR IN PART WITHOUT THE WRITTEN PERMISSION OF BAYSET PTY LTD CONSTITUTES AN INFRINGEMENT OF COPYRIGHT



**Waterproofing Wet Areas
- Enclosed Shower with Waterstop
Streamline (under screed)**

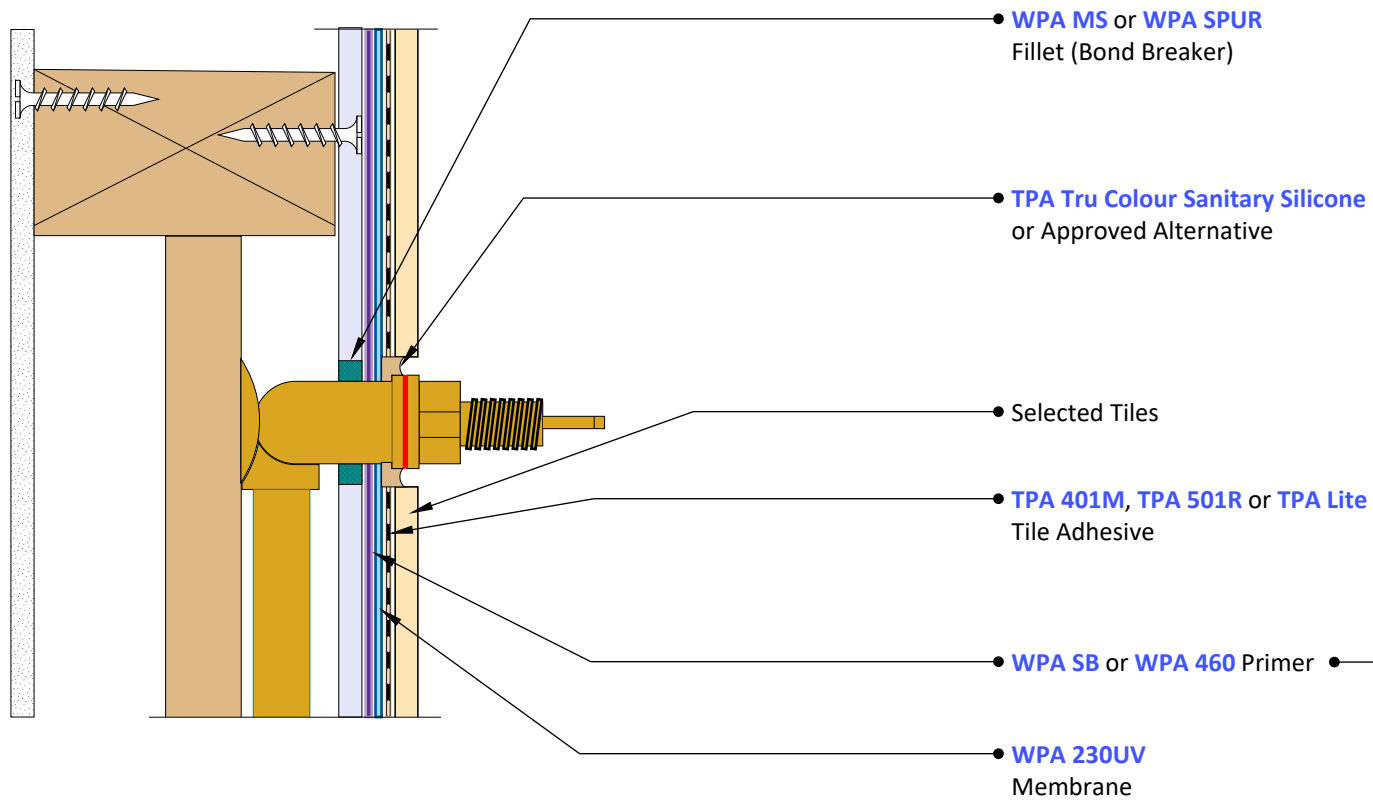
DRAWING NUMBER

WP212

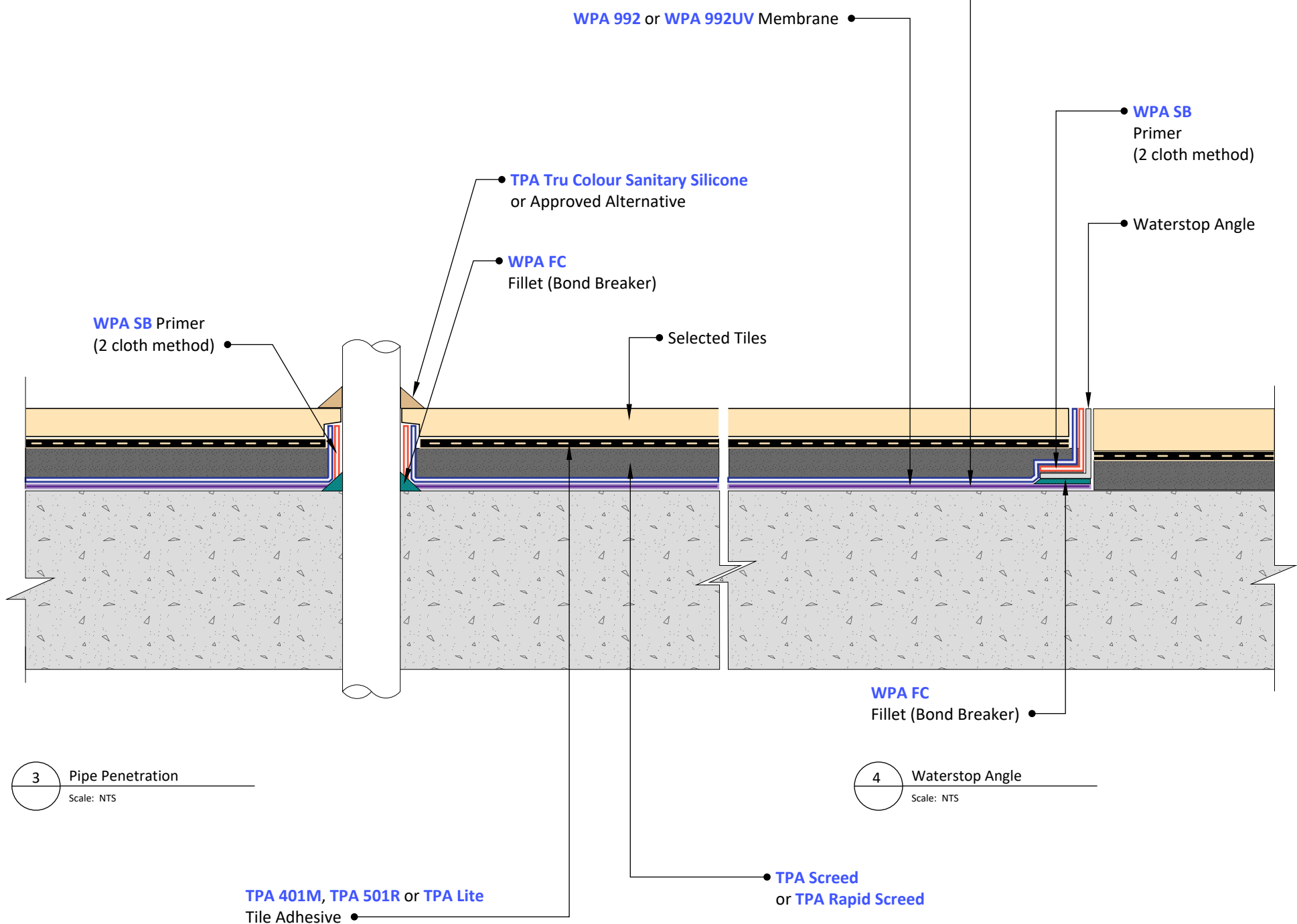
SCALE: NTS

RELEASE: November 6, 2023

DRAWN BY: CS



2 Tap Spindle
Scale: NTS



3 Pipe Penetration
Scale: NTS

4 Waterstop Angle
Scale: NTS

© COPYRIGHT BAYSET PTY LTD
ANY FORM OF REPRODUCTION OF THIS DRAWING IN FULL OR IN PART WITHOUT THE WRITTEN PERMISSION OF BAYSET PTY LTD CONSTITUTES AN INFRINGEMENT OF COPYRIGHT



**Waterproofing Wet Areas
- Enclosed Shower with Waterstop
Streamline (under screed)**

DRAWING NUMBER

WP212

SCALE: NTS

RELEASE: November 6, 2023

DRAWN BY: CS