

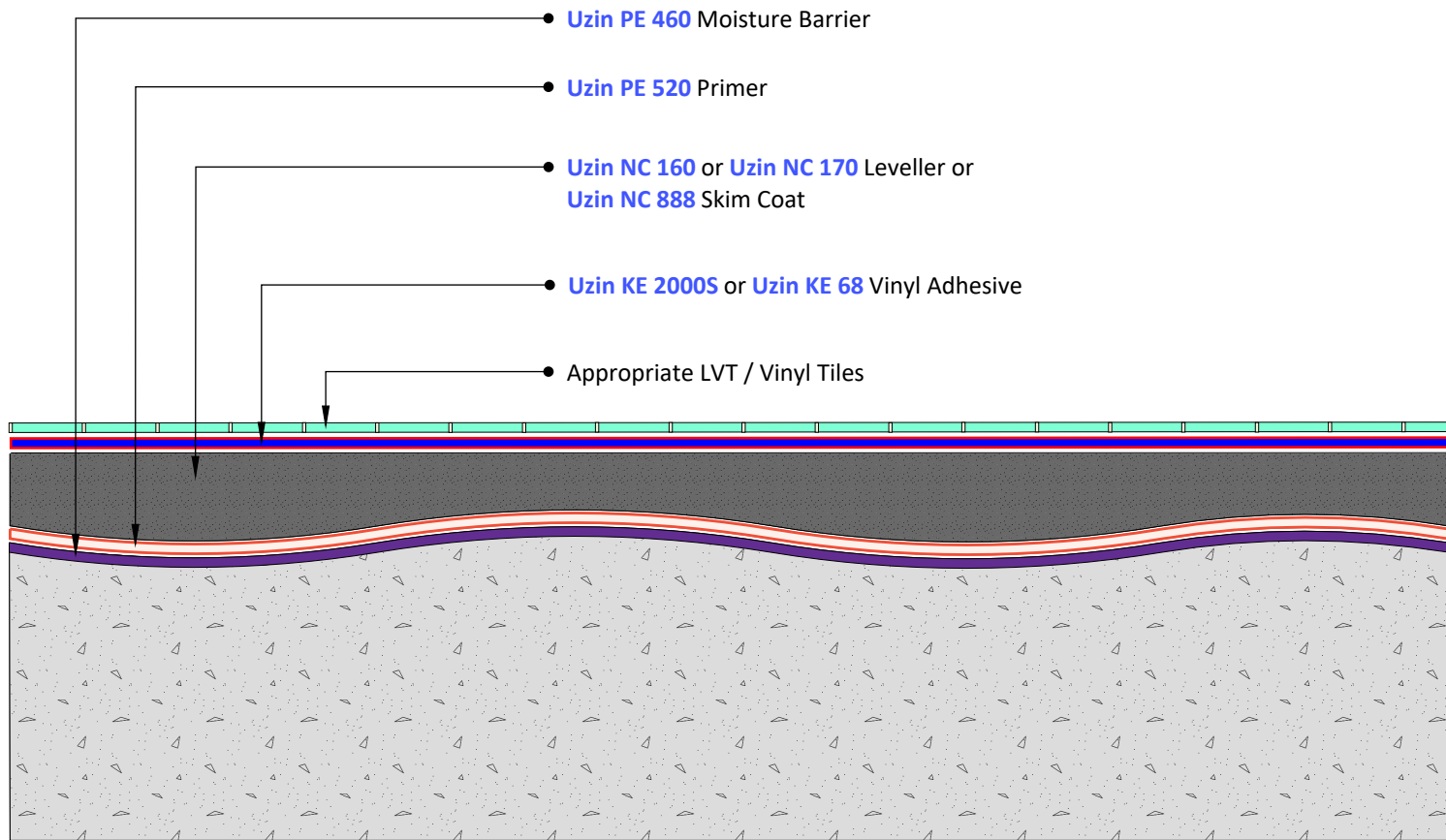
FL711 Floorcoverings - LVT / Vinyl Tiles

Preparation:

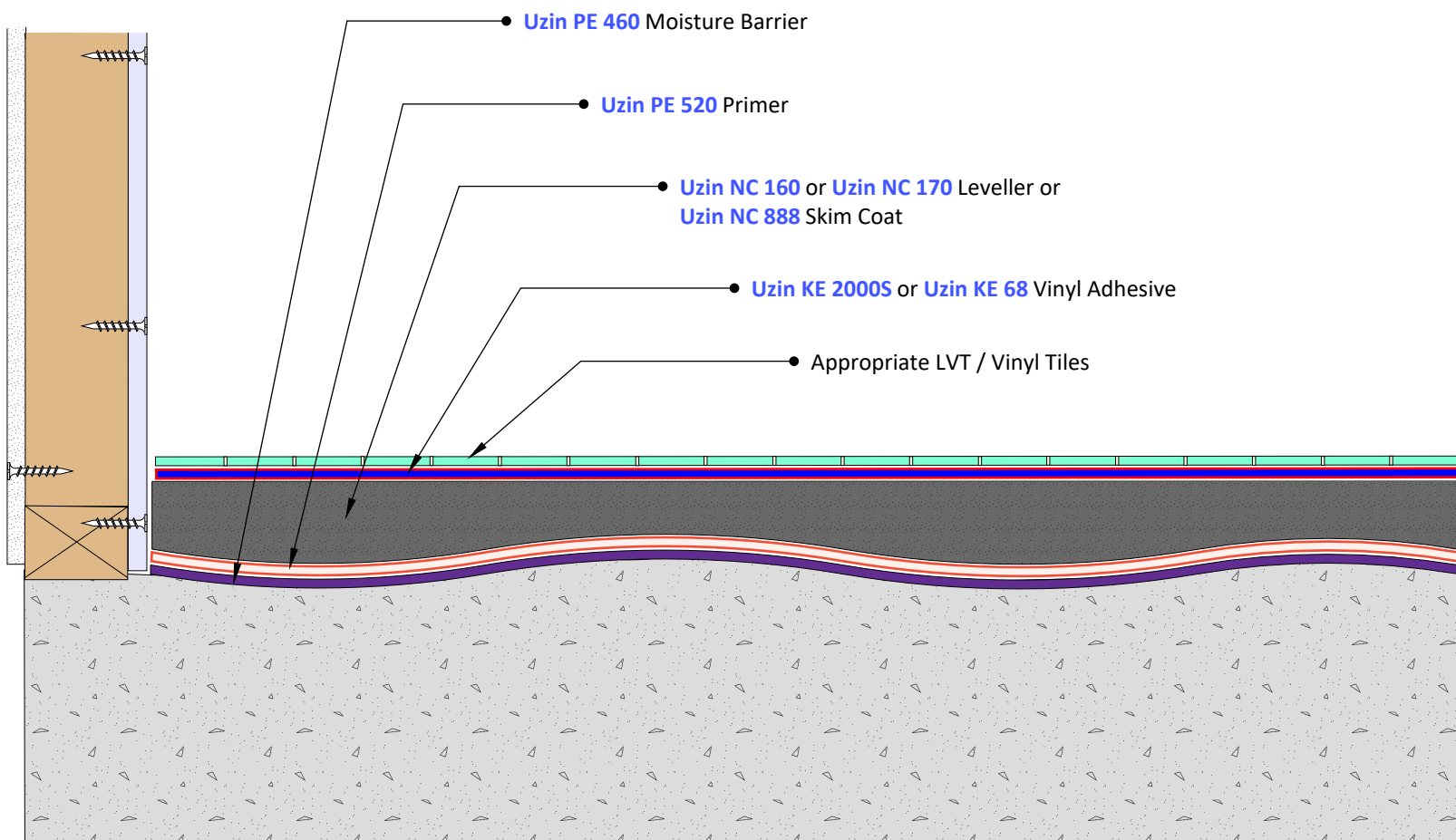
1. Substrates must be firm, clean, dry, and sound. Substrates and subfloors must be free of grease, oil, wax, curing compounds, high levels of moisture (hydrostatic pressure), loose material, paint and any other contaminants. New concrete must be cured for a minimum of 28 days.
2. Thoroughly vacuum loose material and dust.
3. If mechanical preparation is required, prepare the floor using recommended methods as advised by substrate manufacturer.
4. For concrete floors, moisture content and relative humidity tests should be conducted prior to installation.

Installation:

1. Vinyl installation shall be in accordance with AS 1884 Floor Coverings - Resilient Sheet and Tiles - Installation Practices.
2. Apply **Uzin PE 460** as a moisture barrier, if relative humidity tests show moisture above 80%, or hydrostatic pressure and rising dampness are present.
Uzin PE 460 is an epoxy damp proof membrane with low odour, mainly used as moisture barrier up to 98% R.H. on cementitious screeds or concrete. For interior and exterior use.
3. Apply **Uzin PE 280** on all non-porous substrates, including where **Uzin PE 460** has been used.
Uzin PE 280 is a super-fast, film-forming primer, for use on dense and smooth internal substrates.
4. Apply **Uzin PE 520** on all porous substrates.
Uzin PE 520 is a wet primer for cement levelling compounds to bind dust, reduce surface absorbency and increase bond strength.
5. Where required on uneven surfaces from 1 - 20mm, install **Uzin NC 160** or **Uzin NC 170** on primed area/s.
Uzin NC 160 is a self smoothing compound for all types of floor coverings as well as wood flooring for thicknesses from 0 to 20 mm.
Uzin NC 170 is an extremely smooth and quick setting cementitious smoothing compound with excellent flow properties.
6. Apply a skim coat of **Uzin NC 888** to all primed surfaces from featheredge to 4mm.
Uzin NC 888 is an ideal material for repairing minor imperfections, holes, trowel marks, skim coating and ramping. It can be applied by trowel from a true feather edge up to 4 mm depth in a single application.
7. Once the leveling compound has cured, apply a layer of **Uzin KE 2000S** or **Uzin KE 68** with a notched trowel. Ensure to apply only the amount of adhesive that can be covered within the open time.
Uzin KE 2000S is a strong dispersion adhesive with a short waiting time and long working time. It can be used as a wet-set adhesive. For use on internal floors and walls.
Uzin KE 68 is a 1-component hybrid adhesive, with very low emissions and is suitable for demanding areas, such as high mechanical loads and high temperature areas.
8. Install the LVT or Vinyl Tiles into a wet film of adhesive and dry roll on top of the vinyl sheet in a cross hatch motion to ensure the adhesive transfers onto the backing of the LVT or Vinyl Tiles.



1 Cross Section
Scale: NTS



2 Wall / Floor Junction
Scale: NTS

© COPYRIGHT BAYSET PTY LTD
ANY FORM OF REPRODUCTION OF THIS DRAWING IN FULL OR IN PART WITHOUT THE WRITTEN PERMISSION OF BAYSET PTY LTD CONSTITUTES AN INFRINGEMENT OF COPYRIGHT



**Floorcoverings -
LVT / Vinyl Tiles**

DRAWING NUMBER

FL711

SCALE: NTS

RELEASE: November 15,
2023

DRAWN BY: CS