

FOXY'S BAKERY

Hychem Hycrete SL Floor as it would be robust for the movement of steel wheeled equipment...

Overview

Property Type: Commercial

Project Type: Epoxy Flooring

Scope: Epoxy floor repair for commercial bakery

Applicator: Epo Floors

Category: Flooring

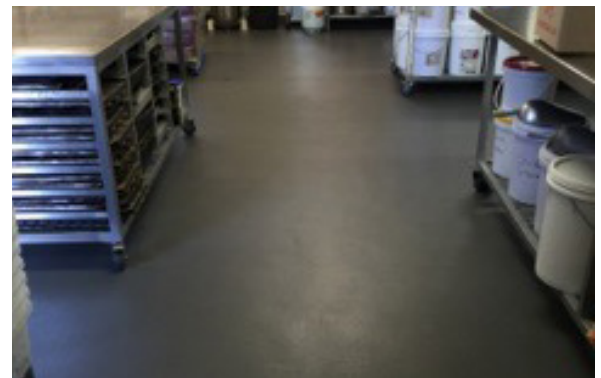
Products Used

- Hychem Hycrete PU-SL

Project Details

Due to a QLD Health inspection, Foxy's bakery was given 30 days for the epoxy floor to be repaired or replaced as bare concrete was a health hazard.

Dan from Epo Floors provided Foxy's with an option of using Hychem Hycrete PU-SL as it would be robust for the movement of steel wheeled equipment, constant hammering by polyurethane wheeled trolleys, provide slip resistance and stop the degradation of the concrete floor due to yeast entering the concrete slab.



The Benefits

Hycrete PU-SL

Hycrete PU-SL is a unique polyurethane concrete product which is applied as a topping on concrete floors where difficult service conditions are the norm. Hycrete PU-SL is recommended for use where exposure to temperatures up to 120 °C is expected. For these conditions a minimum of 9 mm is recommended. Hycrete PU-SL is also the product of choice where maximum resistance to acetic acid, lactic acid and other organic acids is required. Resistance to food acid (e.g. phosphoric acid) and sanitising chemicals such as peroxyacetic acid solutions is also excellent.

The system is based on a solvent-less polyurethane and a cementitious quartz filler blend. The product is usually applied as a 6 mm broadcast topping complete with a range of anti-slip finishes. This broadcast system should be sealed with Hycrete PU-TC. Hycrete PU-SL can also be applied as a single layer, smooth seamless 4 mm self-levelling topping.

- Heavy duty, durable, abrasion and impact resistant
- Chemically resistant to acids, caustics, fats and cleaning solutions
- Fast installation with no odour issues
- Can be applied to 7 day old concrete
- Moisture tolerant and can be applied to a slightly damp surface
- Available with a chemical accelerator for fast cure time even at low temperatures
- Available in a variety of non-slip textures to meet and exceed Australian Standards for safety
- Supplied as a pre-packaged kit for uniform consistency
- Available in a range of colours

