

Waterproofing Membranes

- Water Based Liquid Membranes..... 24
- Cementitious Membranes 30
- Trafficable Membrane Systems 34
- Self Adhesive Membrane Systems 38
- Torch Applied Membrane Systems 40
- Interclip Roof Penetration Sealing System..... 46
- Cetco® Bentonite Geotextile
Waterproofing Systems..... 50
- John Newton Waterproofing Systems 54
- Admixes 59



WATER BASED LIQUID MEMBRANES

Aqua Blok SBR



- Aqua Blok is a waterborne flexible waterproof membrane designed for use under tiled finishes that is capable of accommodating expected structural movement.

Colour	Size	Code
Orange	15 litre	411-132

Aqua Blok WPU



- Aqua Blok WPU is an elastomeric, one part, fibre reinforced, water based polyurethane membrane used for waterproofing shower recesses, bathrooms, laundries, decks, balconies and rooftops.

Colour	Size	Code
Grey	15 litre	411-133

ASA Dampfix Gold Water Based PU



- Water-based polyurethane-acrylic waterproofing membrane for internal or external waterproofing.
- Dampfix Gold is fast drying and compatible with a wide range of ASA tile adhesives.
- Far exceeds the requirements of AS/NZS 4858 Class III membrane.

Colour	Size	Code
Grey	15 litre	411-140

Mapei Mapegum WPS



- Fast drying flexible under tile liquid waterproofing membrane for bathrooms, kitchens, laundries and balconies applied prior to laying ceramic tiles.
- AS4858 Class III membrane.

Colour	Size	Code
Grey	5kg	415-030
Grey	10kg	415-010
Grey	25kg	415-033

WATER BASED LIQUID MEMBRANES

ASA Dampfix 2 (Fibre)

- A single part, water based acrylic, Class II waterproofing membrane system that meets the requirements of AS3740 by complying with AS/NZ 4858. Does not become brittle with age.
- Class II, medium elasticity. Recoat in 2 hours @ 20° C & 50% RH.
- Tile after 72 hours in most conditions. May be tiled on directly with approved ASA adhesives.
- Reinforced with clump free fibres. No mixing. Flood test in 72 hours.
- High resistance to detergents and bleach. Will not re-emulsify after curing.
- Excellent adhesion to concrete, rendered masonry, wet area plasterboard, FC sheet and plywood.
- Can be applied to damp substrates, i.e. not wet or saturated with free water on the surface.

Colour	Size	Code
White	20 litre	411-607



Mapei Plastimul Bitumen Waterproofing Emulsion

- Plastimul is a solvent-free membrane consisting of selected water-emulsified bitumens, special fine graded aggregates and additives, manufactured according to a formula developed in the Mapei research laboratories.
- Plastimul's thixotropic consistency makes it easy to use for waterproofing even vertical and sloping surfaces.
- It can also be used to waterproof masonry or concrete structures even when their surfaces are still damp, due to insufficient curing or humidity given off by the atmosphere.
- When completely dry Plastimul forms a waterproof membrane that is resistant to re-emulsifying after prolonged immersion in water.

Colour	Size	Code
Black	30kg	415-020



Mapei Aqua Defense Fast Drying Membrane

Ready to use, one component, ultra-quick drying, flexible liquid membrane for waterproofing under ceramic, marble and mosaic tiles, for internal and external applications.

Recommended Uses

- Balconies and terraces.
- Bathrooms and shower cubicles.
- Laundry rooms.
- Saunas and damp environments in general.

Colour	Size	Code
Blue	15kg	415-034



WATER BASED LIQUID MEMBRANES

Waterproofing Products Australia WPA 500



- Fast curing elasticised water based membrane system, which cures to form a durable, elastic, seamless, odourless and impervious membrane that will not re-emulsify once fully cured.
- Use in internal and external areas designed to be tiled over including, shower recesses, bathrooms, laundries, balconies, decks and podiums.
- Conforms with AS/NZS 4858.

Colour	Size	Code
Blue	4 litre	419-154
Blue	15 litre	419-155
Grey	15 litre	419-156

Waterproofing Products Australia WPA 500LV



- Low viscosity fast curing elasticised water based membrane system, which cures to form a durable, elastic, seamless, odourless and impervious membrane that will not re-emulsify once fully cured.
- Use in internal and external areas designed to be tiled over including, shower recesses, bathrooms, laundries, balconies, decks and podiums.
- Conforms with AS/NZS 4858.

Colour	Size	Code
Grey	15 litre	419-159

Waterproofing Products Australia WPA 880 Tanking



WPA 880 Tanking is a chemically modified waterborne flexible waterproof membrane designed for use in demanding external waterproofing applications. WPA 880 Tanking cures to form a durable, tough, impervious membrane that will not re-emulsify when fully cured.

Recommended Uses

- Retaining walls, planter boxes.
- Roof tops not exposed to ultra violet radiation (UV exposed roof tops must be over coated with Rebound Ace Synpave coating).

Colour	Size	Code
Charcoal	15 litre	419-036

WPA MEMBRANES

- Designed for the applicator
- Made in Australia for Australian conditions
- From the basement to the rooftop



SB PRIMER

WPA SB Primer is a clear fast drying solvent based primer with good penetrating properties. It's designed to assist in gaining adhesion on powdery substrates and provides excellent adhesion for subsequent coatings and membranes.

230UV

WPA 230UV is an elastomeric, one part, fibre reinforced, water based polyurethane membrane used for waterproofing shower recesses, bathrooms, decks, balconies and rooftops.

360

WPA 360 water based primer is suitable for use with wet area waterproofing membranes and with correct preparation will achieve very good adhesion on the following surfaces Concrete, Plasterboard, Villaboard and FC sheeting.

460

WPA 460 is a two component water based epoxy primer used to prime most common building substrates.

500

WPA 500 is a waterborne flexible waterproof membrane designed for use under tiled finishes.

500LV

WPA 500LV is a waterborne flexible waterproof membrane designed for use under tiled finishes.

560

WPA 560 Moisture Seal is a two component water-based epoxy designed as a water and vapour proof coating under waterproofing membranes, tiling adhesives, levelling compounds and timber floors.

880 TANKING

WPA 880 Tanking is a chemically modified waterborne flexible waterproof membrane designed for use in demanding external waterproofing applications. WPA 880 Tanking cures to form a durable, tough, impervious membrane that will not re-emulsify when fully cured.

SOLVENT BASED LIQUID MEMBRANES

Aqua Blok Elastodeck BT



- Liquid applied single-component, moisture cured, polyurethane membrane for use in most below ground applications.

Colour	Size	Code
Black	18.9 litre	411-131

ASA Dampfix PU



- A flexible elastic one part moisture cured polyurethane membrane used for waterproofing applications.
- For use in internal and external wet areas, decks and podiums.
- May be directly bonded with Asaflex adhesive after surface is primed with ASA Specialist Primer.

Colour	Size	Code
Grey	15 litre	411-135

ASA Dampshield PU



- One part coal/tar free bitumen modified, moisture curing polyurethane membrane.
- When cured it provides a tough highly elastomeric, impervious barrier to moisture.
- Suitable for most below ground applications.

Colour	Size	Code
Black	18.9 litre	411-101

WPA 990 PU



- A single part, liquid applied, moisture curing, self levelling, waterproofing membrane which cures to form a seamless, tough, durable, elastomeric (class III) waterproofing membrane.
- WPA 990 PU bonds to most suitably primed building substrates and is suitable for above and below ground external applications.

Colour	Size	Code
Grey	15 litre drum	416-100

SOLVENT BASED LIQUID MEMBRANES

Soprema Alsan Flashing

- A waterproofing one component polyurethane/bitumen resin.
- Applied directly to bituminous sheet membranes as a liquid flashing
- UV resistant.



Colour	Size	Code
Brown	19 litre	412-356

Soprema Sopralastic 124ALU

- A waterproofing coating comprised of elastomeric bitumen, mineral fillers and solvents.
- It has a reflective aluminium colour and can be used on metal surfaces including corrugated sheets, gutters, ducts, etc as a bituminous corrosion inhibitor.
- Due to its aluminium leafing pigmentation, it is an ideal reflective coating, therefore cools down the building interior temperature and is highly resistant to UV light.



Colour	Size	Code
Silver	18 litre drum	412-357

Cetco Volclay M-2000 Liquid Flashing Urethane Mastic

- One part moisture curing polyurethane membrane.
- Suitable for flashing Volclay terminations, retaining walls and podiums.
- Application by brush or roller.



Colour	Size	Code
Black	18.9 litre	410-567

CEMENTITIOUS MEMBRANES

Aqua Blok 2 Part



- AquaBlok 2 Part is a flexible, fast-drying, latex modified, cement based, two-part waterproofing membrane.
- AquaBlok 2 Part can withstand up to 1.5 bar of negative head hydro-static pressure.
- It is suitable for internal and external waterproofing of shower recesses, bathrooms, balconies, roofs and decks.
- This product is also suitable for areas of continuous water immersion such as swimming pools, spas, water tanks and ponds.

Colour	Size	Code
Grey	10 litre drum + 1.5kg bag	420-183

ASA DampFix 3



- 2 part cement based membrane for internal, external or immersed area waterproofing. DampFix 3 is compatible with a range of ASA tiling adhesives.
- Complies with AS/NZS 4858 and is classified Class II medium extensibility.

Colour	Size	Code
Grey	20 litre + 20kg	400-769

Cetco Cetcoat™



- Cement based coating which waterproofs concrete and masonry surfaces through a crystallization process.
- The unique chemical composition allows Cetcoat to react with water to create a penetrating crystalline growth within the concrete.
- This crystalline growth serves to densify and block the porosity of the concrete, creating an impervious waterproofing barrier.

Colour	Size	Code
Grey	17kg kit	420-213

Krystol T1



- The Krystol T1/T2® concrete waterproofing treatment is a cost-effective, permanent and reliable alternative to traditional membrane-based waterproofing systems for the prevention, repair and maintenance of existing concrete structures.
- Krystol technology becomes an integral part of the concrete. It is surface applied to existing structures to repair leaking concrete and eliminate future leaking through micro cracks and pores.
- The Krystol T1/T2® system is permanent and replaces the need for conventional membranes.

Colour	Size	Code
Grey	5kg	203-207
Grey	25kg	203-206

CEMENTITIOUS MEMBRANES

Krystol T2

- Krystol T2 is applied as the second coat for the Krystol T1/T2™ system.
- Using Krystol T2 for the second coat will give a harder, more durable finish and at a much lower cost.



Colour	Size	Code
Grey	5kg	420-400
Grey	25kg	203-204

Mapei Idrosilex Pronto

- Ready-to-use heavy duty cementitious waterproofing mortar used to waterproof foundations, walls, cellars, basements, lift rooms, swimming-pools, canals and reservoirs.
- Formulated from cement binders and special waterproofing additives, Idrosilex Pronto can be applied with a brush, trowel or spray.



Colour	Size	Code
Grey	20kg	420-100
White	25kg	420-101

Mapei Mapelastastic Foundation

- Two component, elastic cementitious membrane for waterproofing concrete surfaces subject to both positive and negative water pressure.
- Will withstand up to 15 metres negative hydrostatic pressure.



Colour	Size	Code
Grey	22 kg bag	420-191 Part A
White	10 kg drum	420-192 Part B

CEMENTITIOUS MEMBRANES

Mapei Mapelastic Smart



- A two component, high flexibility cementitious mortar, used for waterproofing concrete surfaces, balconies, terraces, basins and swimming pools.
- Can be applied by brush or with a roller.
- Used to form a highly flexible, waterproof and protective coating on concrete structures.
- May be applied on cementitious screeds, existing floors and renders to waterproof bathrooms, showers, balconies, terraces and swimming pools before laying ceramic tiles and natural stone.
- AS4020 Potable Water Approved.

Colour	Size	Code
Grey	20 kg bag	420-180 Part A
White	10 kg drum	420-181 Part B





Mapelastic® Smart

Waterproofing solutions...anywhere, everytime.

Mapelastic Smart is a two-component, highly flexible cementitious membrane for waterproofing foundations, retaining walls, balconies, terraces, bathrooms and swimming pools.

- Suitable for application in damp conditions
- **Can be applied over green concrete**
- Strong and durable to handle worksite conditions
- Compatible with most substrates and adhesives
- Waterproofs even irregular shaped elements
- Apply by brush, roller, trowel or spray
- **Complies with GREEN STAR™ requirements**
- Branz Appraisal Certificate No's 484 and 485



**The Smart
Waterproofer**



For more information visit www.mapei.com.au



TRAFFICABLE MEMBRANE SYSTEMS

Soprema Trafik HP 500



Soprema Trafik HP 500 is an extremely durable, and cost effective, liquid waterproofing system. Part of Soprema's Alsan range of polyurethane waterproofing systems. The Trafik HP 500 system consists of a zero VOC primer coat and three single component polyurethane coats. Due to its superior elongation properties and high abrasive resistance, the Trafik HP 500 system waterproofs and protects concrete structures from residential balconies to heavy traffic commercial parking structures.

Alsan Trafik HP 500 Advantages:

- **Highly resistant:** The Trafik HP 500 system resists punctures, wear, temperature variations and UV rays by providing optimal protection, even in high traffic areas.
- **Light-weight, heavy-duty System:** The Trafik HP 500 system, weighing only 0.41 lb/ft² (2 kg/m²), is a lightweight, heavy duty system that does not need to be recovered by concrete or asphalt, offering the maximum height in parking structures.
- **Reduced risk of water infiltration:** The Trafik HP 500 system is the perfect solution for waterproofing upstands and complex details. This liquid waterproofing technology provides a smooth, seamless membrane that reduces the risk of any water infiltration.
- **Worry free application:** Trafik HP 500 products are single component, polyurethane waterproofing products that do not require on site mixing, providing efficient installation and reducing the risk of curing issues.
- **Excellent chemical resistance:** The Trafik HP 500 system has been tested in laboratory conditions using ASTM I 308 D and has received "excellent" (retains properties) ratings for: oxygenated gasoline, hydraulic fluid, motor oil, de-icer, oils and fats, aviation fuel, diesel fuel, antifreeze, acid rain, sea water.

Alsan Trafik HP 500 System Components:

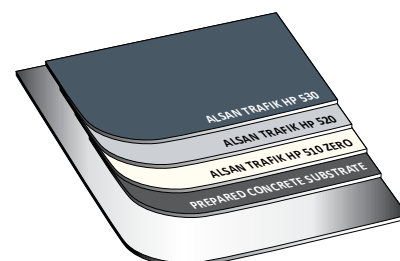
- TRAFIK HP 510 ZERO single component polyurethane primer promotes the adhesion of the TRAFIK HP system to the substrate.
- TRAFIK HP 520 single component, ready to use, polyurethane waterproofing application. Color: light grey.
- TRAFIK HP 530 single component, ready to use, polyurethane wear coat that ensures the durability of the TRAFIK HP 500 system.
- TRAFIK HP 540 single component, ready to use, polyurethane finish coat. Provides the TRAFIK HP 500 system with greater durability and facilitates easy clean up.



TRAFFICABLE MEMBRANE SYSTEMS

Pedestrian Traffic

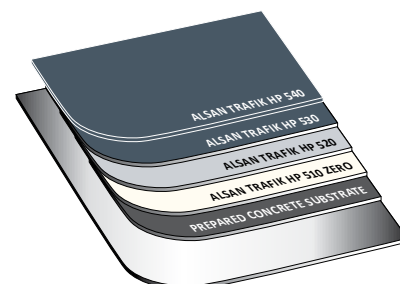
- For pedestrian traffic areas such as mechanical rooms, balconies and plaza decks: these surfaces allow for a lighter solution, requiring fewer coats.



Description	Code
Trafik HP 510 Zero Primer	490-256
Trafik HP 520 Membrane	425-100
Trafik HP 530 Wear Coat & Aggregate	425-101

Light Duty Vehicular Traffic

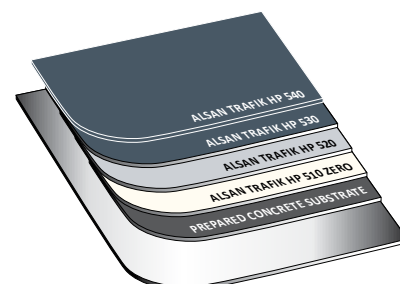
- For light duty vehicular traffic areas such as multilevel parking garages, SOPREMA recommends an intermediary system to waterproof pedestrian and parking stalls.



Description	Code
Trafik HP 510 Zero Primer	490-256
Trafik HP 520 Membrane	425-100
Trafik HP 530 Wear Coat & Aggregate	425-101
Trafik HP 540 Finish Coat	425-102

Heavy Duty Vehicular Traffic

- For heavy duty vehicular traffic areas such as turning radii, ramps and paying turnstiles in multilevel parking decks, Soprema recommends the heavy duty system.



Description	Code
Trafik HP 510 Zero Primer	490-256
Trafik HP 520 Membrane	425-100
Trafik HP 530 Wear Coat & Aggregate x 2	425-101
Trafik HP 540 Finish Coat	425-102

TRAFFICABLE MEMBRANE SYSTEMS

SopremaTrafik EP 110



- Alsan Trafik EP 110 is a low VOC and low odour two component epoxy primer. It is used with the Alsan Trafik HP 500 systems where it provides a fast curing layer.
- Alsan Trafik EP 110 is also used as a junction where the Alsan Trafik HP 500 system meets a SOPREMA bituminous membrane.

Colour	Size	Code
Amber	3.75 litre	490-257

Soprema Alsan Trafik HP510 Zero



- A single component primer without volatile organic compounds (VOC's) composed of polyurethane resin, which is used to prime substrates such as concrete and plywood.

Colour	Size	Code
Transparent	19 litre	490-256

Soprema Alsan Trafik HP510 LO



- A low odour formulation of Trafik HP510 Zero.

Colour	Size	Code
Transparent	19 litre	490-254

Soprema Alsan Trafik HP520



- A single component polyurethane resin waterproofing membrane.

Colour	Size	Code
Grey	19 litre	425-100

TRAFFICABLE MEMBRANE SYSTEMS

Soprema Alsan Trafik HP530

- Alsan Trafik HP 530 is a single component polyurethane resin wear coat.
- It is installed in one or more layers depending on the traffic density.

Colour	Size	Code
Light Grey	19 litre	425-101
Dark Grey	19 litre	425-103



Soprema Alsan Trafik HP540

- Alsan Trafik HP540 is a single component polyurethane resin finish coat.
- May be tinted.

Colour	Size	Code
Transparent	19 litre	425-102



Soprema Alsan Trafik Colourant Pack

- Colourant pack for Alsan Trafik HP540.

Colour	Size	Code
Light Grey	1 kg	425-110
Dark Grey	1 kg	425-111
Yellow	1 kg	425-112



SELF ADHESIVE MEMBRANE SYSTEMS

Soprema Colphene 1500

- A self-adhesive flexible SBS elastomeric bitumen base sheet waterproofing membrane with laminated, anti-root, polyethylene film on the topside.
- The self-adhesive bitumen on the underside is protected by a silicone release film.
- Use for retaining walls, underground foundations, podium decks.
- 20m² per roll.

Size

20 metre x 1 metre x 1.5mm roll

Code

450-202

Soprema Colphene 3000

- A self-adhesive waterproofing membrane composed of SBS modified bitumen and a polyethylene woven complex. A silicone release sheet protects the self-adhesive side.
- Colphene 3000 is used to waterproof foundation walls, plaza decks, tunnels, etc.
- It must always be laid on clean, dry, solid substrates, which have previously been primed with Elastocol Stick primer/adhesive.
- Available in "Summer Grade" for applications at temperatures above 10°C and in "Winter Grade" for applications at temperatures between -10°C and 10°C.
- 18.7m² per roll.

Size

18.7 metre x 1 metre x 1.5mm roll

Code

450-200



SELF ADHESIVE MEMBRANE SYSTEMS

Soprema Colphene ICF

- A self-adhesive waterproofing membrane dedicated to the waterproofing of insulated concrete forms (ICF) foundations. It is composed of SBS modified bitumen and a polyethylene woven complex. A silicone release paper protects the adhesive side.
- Colphene ICF can be applied directly to the polystyrene (expanded and extruded) surface of ICF foundations.
- If specific conditions call for the use of a primer, Elastocol Stick H²O is recommended.
- Colphene ICF is designed to be used as a waterproofing membrane in below grade applications only. Membrane must be covered and backfilled after installation is completed.

Size	Code
22.9 metre x 0.91 metre x 1mm roll (20.8m ² per roll)	450-504



Soprema Colphene BSW (Export)

- A waterproofing membrane composed of a composite reinforcement and SBS modified bitumen. The self adhesive under face is covered by a silicone release film.
- The top face is sanded. Colphene BSW is used under concrete slabs, on foundation walls and for blindside waterproofing.
- The waterproofing membrane may be installed on concrete, drainage boards or wood lagging in blindside waterproofing applications prior to concrete pouring.
- 10m² per roll.

Size	Code
10 metre x 1 metre x 3mm roll	450-201



Soprema Soprastar Stick HD GR

- This membrane is a heavy duty composite reinforced cap sheet with highly reflective white slate flakes.
- These slates help cool down the surface temperature of the roofing system by reflecting the sun's rays and consequently extending its service life.
- The installation of Soprastar membranes on several roofs in urban areas could significantly help in the reduction of the urban heat island effect.
- 10m² per roll.

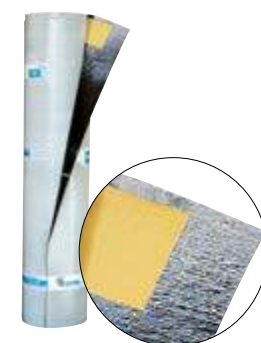
Size	Code
10 metre x 1 metre x 3.5mm roll	450-499



Soprema Sopralene Stick Adhesive

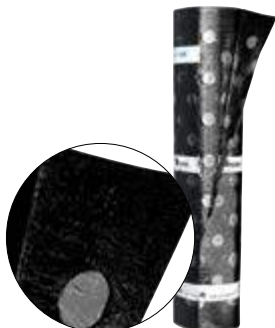
- A sanded top faced, self-adhesive base sheet membrane with SBS modified bitumen reinforced with a polyester and glass composite reinforcement.
- A silicone release film covers the self-adhesive under face and sand protects the top face.
- Use in conjunction with Elastocol Stick adhesive or Elastocol Stick H²O primer.
- 10m² per roll.

Size	Code
10 metre x 1 metre x 3mm roll	450-509



TORCH APPLIED MEMBRANE SYSTEMS

Soprema Aerisol Flam Vent Sheet



- Aerisol Flam is a perforated sheet designed for partial bonding of torch-applied waterproofing sheets.
- Aerisol Flam provides controlled intermittent bonding to the underlying surface and permits the lateral passage of air and moisture.
- Aerisol Flam is loose laid, with edges butted on the primed substrate.
- The waterproof sheet is then fully torched onto the Aerisol Flam, making sure that the melted bitumen flows into the perforations.

Size	Code
40 metre x 1 metre	450-500

Soprema Soprasun 3.0S



- An APP modified membrane reinforced with non-woven polyester and a sanded face.
- Soprasun has excellent dimensional stability, tensile strength and ultimate elongation.

Size	Code
10 metre x 1 metre x 3mm roll	450-501

Soprema Soprasun 4.0S



- An APP modified membrane reinforced with non-woven polyester and a sanded face.
- Soprasun has excellent dimensional stability, tensile strength and ultimate elongation.

Size	Code
10 metre x 1 metre x 4mm roll	450-502

Soprema Soprasun 4.0F



- An APP modified membrane reinforced with non-woven polyester and a Slate Flake upper face.
- Soprasun has excellent dimensional stability, tensile strength and ultimate elongation.

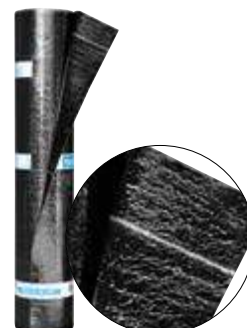
Size	Code
10 metre x 1 metre x 4mm roll	450-503

TORCH APPLIED MEMBRANE SYSTEMS

Soprema Soprasun 3.0P

- APP modified membrane reinforced with non-woven polyester and a film face.
- Soprasun has excellent dimensional stability, tensile strength and ultimate elongation.

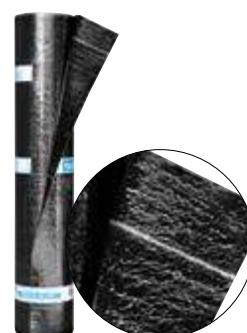
Size	Code
10 metre x 1 metre x 3mm roll	450-518



Soprema Sopralene Flam 180 Plain

- Sopralene 180 membranes are composed of a non-woven polyester reinforcement and SBS modified bitumen.
- Sopralene Flam 180 torch applied membrane has a film or plain top face and can be used as a waterproofing membrane on foundation walls or vertical below grade concrete surfaces.

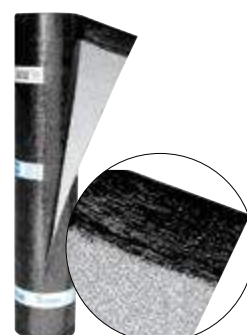
Colour	Size	Code
Black	10metre x 1 metre x 3mm roll	450-507



Soprema Sopralene Flam 180 GR 4.0F

- Sopralene 180 membranes are composed of a non-woven polyester reinforcement and SBS modified bitumen.
- Sopralene Flam 180 GR torch applied membrane has a grey granulated top face in which is used a cap sheet over Flam 180 plain.

Colour	Size	Code
Grey	8metre x 1 metre x 4mm roll	450-508



Soprema Soprastar Flam HD GR

- This membrane is a heavy duty composite reinforced cap sheet with highly reflective white slate flakes.
- These slates help cool down the surface temperature of the roofing system by reflecting the sun's rays and consequently extending its service life.
- The installation of Soprastar membranes on several roofs in urban areas could significantly help in the reduction of the urban heat island effect.

Colour	Size	Code
White	10metre x 1 metre x 3.5mm roll	450-506



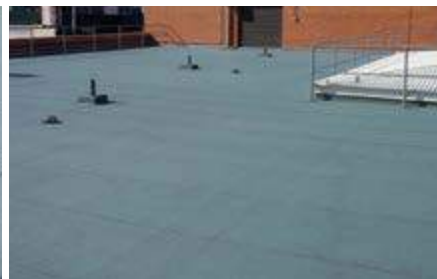
TORCH APPLIED MEMBRANE SYSTEMS

Soprema Soprasun 4AR

- An APP modified bitumen and 180gsm/m² non-woven cap sheet membrane with a grey aggregated finish.
- Used as a single-ply waterproofing membrane or as an upper layer in a multilayer system to provide a long lasting and dependable UV stable membrane system.



Colour	Size	Code
Grey	10 metre x 1 metre x 4mm roll	450-517



Soprema Sopramastic

- A black, solvent based mastic containing SBS modified bitumen, fibres and mineral fillers.
- Used as the jointing mastic, caulking material and filler for bituminous membrane systems.
- Formulated with a high level of polymer to resist flow at high temperatures.



Colour	Size	Code
Black	310ml cartridge	712-325
Black	10 litre drum	712-331

TORCH APPLIED MEMBRANE SYSTEMS

Soprema Antirock Primer

- A blend of SBS modified bitumen, fast-evaporating solvents and adhesive enhancing additives.
- It is used to prime concrete and metal surfaces on civil engineering structures in order to improve the adhesion of torch-applied Antirock waterproofing membranes.



Colour	Size	Code
Black	19 litre drum	490-255

Soprema Antirock Membrane

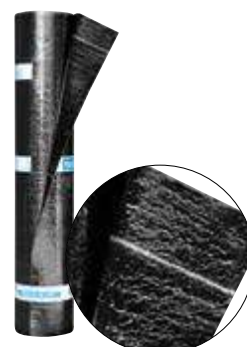
- The Antirock waterproofing membrane is composed of a non-woven polyester reinforcement and SBS modified bitumen. Its underface is protected by a thermofusible plastic film and its top face is covered with mineral granules.
- The Antirock membrane is designed to waterproof parking lots, bridges and other civil engineering structures. After installation Antirock membranes can be easily recovered with asphalt. Antirock waterproofing membranes are also highly resistant to puncture.
- It must be installed by thermofusion on dry and clean surfaces previously primed with Antirock Primer.



Colour	Size	Code
Black	8 metre x 1 metre x 4.5mm roll	450-520

Soprema Sopragum Garden 4C

- Waterproofing membrane composed by APP modified bitumen with a composite polyester reinforcement which results in a better dimensional stability and mechanical resistance. The reinforcement is impregnated with an APP compound. The homogeneity between the covering mass and the impregnation compound results in an extremely high resistance to delamination. The coating mass and the reinforcement contain a root-repellent substance to prevent roots perforating the waterproofing system. The upper side is finished with sand/talcum. A torch-on film protects the lower side (torch-on method).



Colour	Size	Code
Sanded/Talc Finish	10 metre x 1 metre x 4mm C1	450-522
Sanded/Talc Finish	10 metre x 1 metre x 4mm C3	450-521

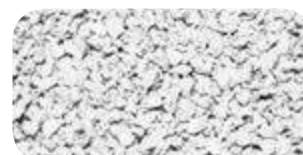
Soprema Grey Flakes for APP Membranes

Colour	Size	Code
Grey	30kg bag	450-515



Soprema Soprastar Granules

Colour	Size	Code
White	15kg drum	450-516



TORCH APPLIED MEMBRANE SYSTEMS

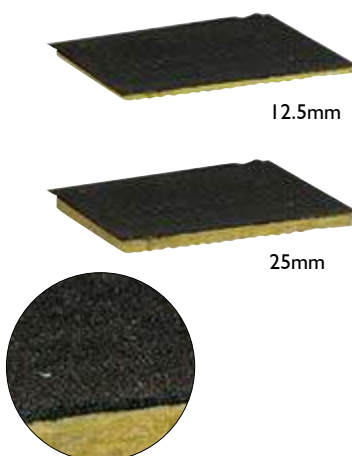
Soprema Soprajoint



- A waterproofing membrane specifically designed for waterproofing expansion joints where the maximum multidirectional movement is 20mm.
- This product is applied by heat welding. Soprajoint is manufactured by combining a polyester fabric with SBS-modified bitumen.
- The under face is covered with a thermo fusible plastic film.
- The top face has an aluminium foil adhered to the centre of the membrane and is covered by a protective silicone paper to be removed during application.

Colour	Size	Code
Aluminium	10 metre x 450mm roll	301-500

Soprema Xpress Board



A mineral wool fibre insulation panel made from basalt rock onto which a polyester reinforced SBS modified bitumen membrane is factory applied. The top surface of the membrane is either sanded or covered with a thermofusible plastic film. Xpress board is available in various thicknesses; they can be mechanically fastened or bonded with hot bitumen. Xpress Board allows you to realize 5 applications with a single product.

- Thermal and vapour barrier.
- Insulation and base sheet.
- Insulation overlay board and base sheet.
- Upstand board and base sheet flashing (mechanically fastened only).
- Recovery board and base sheet.

Size	Code
4.88 metre x 0.91 metre x 12.5mm sheet (4.44m ²)	450-512
4.88 metre x 0.91 metre x 25mm sheet (4.44m ²)	450-510
4.88 metre x 0.91 metre x 25mm sheet coated (4.44m ²)	450-514

Soprema Duotack Adhesive



- A low-rise two-part urethane adhesive. It can be used to adhere with one or several layers of insulation boards of polystyrene and polyisocyanurate and for cover boards such as asphaltic, wood fibre, perlite, gypsum or cement boards.
- It is also suitable for the attachment of these same boards together or on wood, concrete, sanded surface of bituminous vapour retarder and sopravapour membranes.
- Duotack can also be used to adhere thermal barriers on steel decks.

Colour	Size	Code
Amber	1.5 litre dual cartridge	711-572

Constantly evolving through diversification



SOPREMA products fully meet all of your construction projects.



www.soprema.com.au

INTERCLIP ROOF PENETRATION SEALING SYSTEM

Soprema Interclip System

Soprema Interclip System is a prefabricated curb system that is easily assembled on site and filled with fast setting, solvent free, IC Duomastic to create a watertight roof detail at technically challenging roof penetrations. The Interclip system can be installed directly over the granulated surface of modified bitumen cap sheet membranes.

This system is composed of three products:

InterClip: A prefabricated inter-locking pocket available in a variety of sizes.

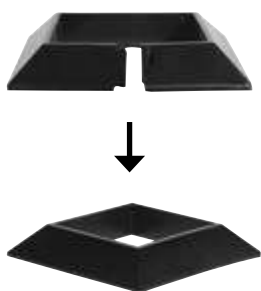
IC Sealant: A single component elastomeric polyurethane sealant without isocyanates.

IC Duomastic: A fast setting, solvent free, multiuse mastic that sets within minutes of application.



Soprema Interclip Prefabricated & Interlocking Pockets

- Available in a variety of sizes to suit all roof penetration applications.



Description	Size	Code
Prefabricated Pitch Pocket	4" square (101mm)	904-610
Prefabricated Pitch Pocket	6" square (152mm)	904-611
Prefabricated Pitch Pocket	8" square (203mm)	904-612
Prefabricated Pitch Pocket	Inside corner	904-613
Prefabricated Pitch Pocket	Outside corner	904-614
Prefabricated Pitch Pocket	6" straight piece (152mm)	904-615
Prefabricated Pitch Pocket	10" straight piece (254mm)	904-616
Prefabricated Pitch Pocket	12" straight piece (304mm)	904-617

INTERCLIP ROOF PENETRATION SEALING SYSTEM

Soprema IC Sealant

- Multi-purpose, solventless, one component elastomeric polyurethane sealant that is isocyanate free.
- Used to seal the Interclip preformed sections to the substrate.

Description	Size	Code
Soprema IC Sealant	300ml cartridge	711-571



Soprema IC Duomastic

- Multi-purpose, solventless mastic, polyurethane two part sealer/adhesive, that cures rapidly after application.
- Primarily used to fill the Interclip pre-formed sections.

Description	Size	Code
Soprema IC Duomastic	1.5 litre dual cartridge	712-333



Soprema Duotack Applicator Gun - Battery Powered

- Battery powered 1:1 ratio gun for the application of Soprema IC Duomastic and Duotack adhesive cartridges.



Description	Size	Code
Duotack Powered Applicator Gun	1:1 ratio	902-224

Soprema Duotack Applicator Gun - Manual

- Manually operated 1:1 ratio gun for the application of Soprema IC Duomastic and Duotack adhesive cartridges.



Description	Size	Code
Duotack Manual Applicator Gun	1:1 ratio	902-236

Volclay Waterproofing Systems by **CETCO** offer total solution waterproofing. With **CETCO**'s single source capability, you can be sure of a totally integrated waterproofing system that yields ultimate performance. Each product uses the natural swelling and self-healing properties of Volclay® sodium bentonite. This unique mineral was formed from volcanic ash and saltwater millions of years ago, making Volclay products the most environmentally sensitive on the market today. All contain zero VOC, can be installed in almost any weather condition to green concrete, and most importantly, have proven effective for more than 40 years. When wetted, unconfined bentonite can swell up to 15 times its dry volume. When confined under pressure, the bentonite forms an impervious, water-resistant membrane. With Volclay Waterproofing Systems, the problem activates the solution, reliably and automatically. If penetrated after installation, Volclay Waterproofing will self-heal and can seal any tiny cracks caused by ground settlement, concrete shrinkage, or seismic action; problems over which there is normally no control.



The World's Leading Bentonite-Geotextile Waterproofing System

VOLTEX is a highly effective waterproofing composite comprised of two high strength geotextiles and 4.88 kg of Volclay® sodium bentonite per square metre. The two geotextiles are interlocked by a patented needlepunching process which encapsulates the bentonite prior to hydration. **VOLTEX** is excellent for waterproofing below-grade horizontal and vertical concrete surfaces, such as underslabs and property line construction—metal sheet piling, Pre-Cast Panels, shotcrete, contiguous and secant piling. **VOLTEX** can be installed directly over a properly prepared soil substrate without the need of a blinding slab. **VOLTEX DS** incorporates a high-strength HDPE liner bonded to the surface of the non-woven geotextile. The HDPE liner provides superior hydrostatic head and chemical resistance, extremely low vapor permeability ratings, and enhanced protection from inclement weather prior to backfilling.



Advanced BPA Waterproofing Technology

ULTRASEAL is a technological advancement in below-grade waterproofing that combines Volclay® sodium bentonite and a chemically resistant hydrophilic polymer to form a bentonite-polymer alloy (BPA). This homogeneous alloy produces improved contaminant resistance, enhanced swelling properties, and a baseline permeability one magnitude better than natural sodium bentonite. Not only does **ULTRASEAL** have a lower permeability, it weighs 50% less than traditional bentonite products, making it easier to handle and install. The active, swelling properties of the BPA seals small concrete cracks and works under continuous and intermittent hydrostatic conditions.

Two different **ULTRASEAL** products are available: **ULTRASEAL BT** is designed for applications where the concrete has already been placed. Typical applications include back-filled foundations walls, earth covered structures and masonry block walls. **ULTRASEAL SP** is typically used where concrete is poured directly against the membrane, including beneath slabs, and other property line constructions inclusive of shotcrete and metal piling walls.



Dual Membrane Waterproofing Protection

SWELLTITE is a true advancement in waterproofing technology combining the natural waterproofing abilities of Volclay® sodium bentonite with a high strength geomembrane liner for tensile strength and puncture resistance. Unlike other adhered membrane systems which require near perfect installation, **SWELLTITE**'s active bentonite compound can expand and seal small installation imperfections or punctures in the membrane. **SWELLTITE** is easy to install can be applied in almost all weather conditions to green concrete with mechanical fasteners or water-based adhesive.

Typical applications include split-slab deck or plaza construction, backfilled concrete or masonry block walls and Tunnels.

VOLCLAY **WATERSTOP-RX**



RX 101 - 3/4" x 1"

Designed for vertical and horizontal concrete 8" thick or greater.



RX 101T - 1-1/4" x 1/2"

Reinforced trapezoidal designed for shotcrete, extreme hot weather and difficult applications.



RX 102 - 3/8" x 3/4"

Designed for vertical and horizontal concrete 5"-8" thick.

Expanding Waterstops for Concrete Construction Joints

WATERSTOP RX is a flexible strip concrete construction joint waterstop that provides a positive seal by expanding upon contact with water. **WATERSTOP RX** is designed for both continuous and intermittent hydrostatic conditions and has been successfully tested to resist 70m of hydrostatic pressure. The key to the effectiveness of **WATERSTOP RX** is its 75% sodium bentonite content which provides superior expansion to seal cracks and fill small voids.

Installation is fast and easy. Simply adhere **WATERSTOP RX** to the concrete, steel or PVC pipes with **CETCO WB-ADHESIVE** or **CETCO** dual purpose sealant and adhesive; **CETSEAL**.

AKWASWELL is a caulk grade single component swelling paste used to stop water infiltration through concrete construction joints. It is a specially formulated polyurethane-based material with a hydrophilic agent evenly dispersed throughout the paste. **AKWASWELL** is installed with a standard caulk gun and self adheres to dry concrete surfaces; no mechanical fastening or adhesives required.

HYDROSHIELD WARRANTY INFORMATION

CETCO's Hydroshield Quality Assurance Program protects your structure from water ingress with sound design guidance, quality waterproofing products, proper installation and independent inspection programs.

CETCO is able to offer a Product Warranty on all of our Products or its Hydroshield Warranty on all of our Volclay Waterproofing Systems. **CETCO** provides not only waterproofing membranes but a complete product offering incorporating waterstops and detailing products. **CETCO's** commitment to quality allows you to rest easy knowing your structure is protected by the long term performance you expect from your waterproofing system and backed by the industry leading, Hydroshield Quality Assurance Program. Remember, if its worth building, its worth protecting.



CETCO® BENTONITE GEOTEXTILE WATERPROOFING SYSTEMS

Cetco Voltex®



- Voltex is a highly effective waterproofing composite of high strength geotextiles and 1.10 pounds of sodium bentonite per square foot. The high swelling, low permeable sodium bentonite is encapsulated between a non-woven and woven geotextile. A proprietary needlepunch process interlocks the geotextiles together forming an extremely strong composite that maintains the equal coverage of bentonite, as well as protects it from inclement weather and construction related damage.
- Once backfilled, Voltex hydrates and forms a monolithic waterproofing membrane.
- Voltex contains zero VOC, can be installed to green concrete, and most importantly, has proven effective on both new and remedial waterproofing projects worldwide.

Size

5mm x 1.2 metre x 5 metre (6.0m²)

Code

301-400

Cetco Voltex® Super 70



- Voltex is a highly effective waterproofing composite of high strength geotextiles and 1.10 pounds of sodium bentonite per square foot. The high swelling, low permeable sodium bentonite is encapsulated between a non-woven and woven geotextile.
- A proprietary needlepunch process interlocks the geotextiles together forming an extremely strong composite that maintains the equal coverage of bentonite, as well as protects it from inclement weather and construction related damage.
- Once backfilled, Voltex hydrates and forms a monolithic waterproofing membrane. Voltex contains zero VOC, can be installed to green concrete, and most importantly, has proven effective on both new and remedial waterproofing projects worldwide.

Size

5mm x 1.66 metre x 40 metre (66.4m²)

Code

301-401

Cetco Voltex® Super 200



- Voltex is a highly effective waterproofing composite of high strength geotextiles and 1.10 pounds of sodium bentonite per square foot. The high swelling, low permeable sodium bentonite is encapsulated between a non-woven and woven geotextile.
- A proprietary needlepunch process interlocks the geotextiles together forming an extremely strong composite that maintains the equal coverage of bentonite, as well as protects it from inclement weather and construction related damage.
- Once backfilled, Voltex hydrates and forms a monolithic waterproofing membrane.
- Voltex contains zero VOC, can be installed to green concrete, and most importantly, has proven effective on both new and remedial waterproofing projects worldwide.

Size

5mm x 5 metre x 40 metre (200m²)

Code

301-402

Cetco Voltex® DS SWR



- A salt water resistant bentonite designed for below-grade applications. Patented needle punched interlocking geotextiles which encapsulates the bentonite and a HDPE liner bonded to the non-woven geotextile. The high swelling, low permeable sodium bentonite is encapsulated between the two geotextiles.
- A proprietary needlepunch process interlocks the geotextiles together forming an extremely strong composite that maintains the equal coverage of bentonite, as well as protects it from inclement weather and construction related damage. Once backfilled, Voltex DS hydrates and forms a monolithic waterproofing membrane. Voltex DS contains zero VOC, can be installed to green concrete, and most importantly, has proven effective on both new and remedial waterproofing projects worldwide.

Size

5mm x 1.2 metre x 5 metre (6.0m²)

Code

301-403

CETCO® BENTONITE GEOTEXTILE WATERPROOFING SYSTEMS

Cetco Voltex® SWR DS Super 66

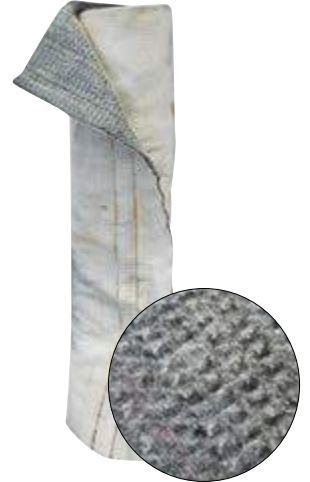
- A salt water resistant bentonite designed for below-grade applications. Patented needle punched interlocking geotextiles which encapsulates the bentonite and a HDPE liner bonded to the non-woven geotextile.
- The high swelling, low permeable sodium bentonite is encapsulated between the two geotextiles.
- A proprietary needlepunch process interlocks the geotextiles together forming an extremely strong composite that maintains the equal coverage of bentonite, as well as protects it from inclement weather and construction related damage. Once backfilled, Voltex DS hydrates and forms a monolithic waterproofing membrane.
- Voltex DS contains zero VOC, can be installed to green concrete, and most importantly, has proven effective on both new and remedial waterproofing projects worldwide.

Size

5mm x 1.66 metre x 40 metre (66.6m²)

Code

301-404



Cetco Voltex® SWR DS Super 200

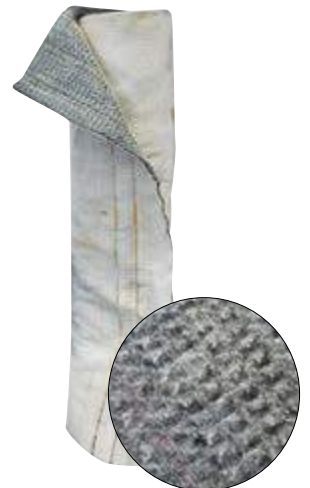
- A salt water resistant bentonite designed for below-grade applications. Patented needle punched interlocking geotextiles which encapsulates the bentonite and a HDPE liner bonded to the non-woven geotextile.
- The high swelling, low permeable sodium bentonite is encapsulated between the two geotextiles.
- A proprietary needlepunch process interlocks the geotextiles together forming an extremely strong composite that maintains the equal coverage of bentonite, as well as protects it from inclement weather and construction related damage.
- Once backfilled, Voltex DS hydrates and forms a monolithic waterproofing membrane. Voltex DS contains zero VOC, can be installed to green concrete, and most importantly, has proven effective on both new and remedial waterproofing projects worldwide.

Size

5mm x 5 metre x 40 metre (200m²)

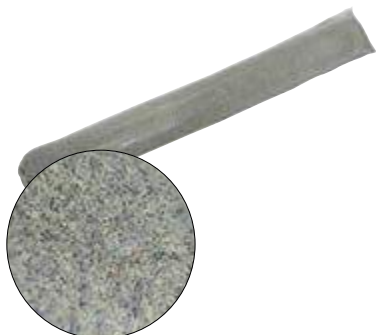
Code

301-405



CETCO® BENTONITE GEOTEXTILE WATERPROOFING SYSTEMS

Cetco Hydrobar Tubes



- Volclay Hydrobar Tubes are a detailing accessory product for Volclay Waterproofing Systems used at the footing/wall junction to provide additional waterproofing protection.
- Hydrobar Tubes consist of a thin, water-soluble tubing filled with granular sodium bentonite. When wet, the tubing dissolves, allowing the bentonite to hydrate and form into a dense, low permeable material that combines with the sodium bentonite in the Volclay System products.
- Each Hydrobar Tube measures 50mm in diameter by 500mm long, assuring a consistent application of sodium bentonite at the critical footing/wall junction.

Size	Code
500mm	712-323

Cetco Granular Bentonite



- Volclay Waterstoppage is chemically treated, granular sodium bentonite used as a detailing accessory product for Volclay Waterproofing Systems.
- When wet, Waterstoppage forms into a dense, low permeable material that combines with the sodium bentonite in the Volclay System products to form a seamless waterproofing membrane.
- Cetco Granular Bentonite is used for detailing of penetrations and sheet laps.

Size	Code
25 kg	712-900

Cetco Bentoseal



- Volclay Bentoseal is trowel-grade, sodium bentonite/butyl-rubber based sealant designed for a variety of surface preparation and waterproof detailing work with Volclay Panels, Swelltite and Voltex waterproofing membranes. Being bentonite based, Bentoseal swells upon contact with water to seal against water intrusion.
- With the consistency of thick grease, Bentoseal is easy to apply and bonds to most substrate materials.

Size	Code
10 litre	712-901

Cetco GF-40SA Flashing Membrane



- GF-40SA is a 1 mm thick self-adhering thermoplastic flashing membrane with excellent UV, tear and puncture resistance.
- GF-40SA is resistant to most forms of fungus, algae, and microbiological attack.
- GF-40SA is used for above and below grade flashing applications including grade terminations, parapet walls, curbs and thru-wall flashing.
- GF-40SA can be used in conditions exposed to direct UV and weather conditions.

Size	Code
0.5 metre x 15.2 metre roll	301-399

CETCO® BENTONITE GEOTEXTILE WATERPROOFING SYSTEMS

Cetco Ultraseal SP

- Three component composite membrane consisting of the BPA core layer between a geotextile and a geomembrane.
- Designed for applications where the concrete is poured directly against the membrane, such as under slab and positive pressure blind-side walls.

Size

3mm x 1.2 metre x 7.6 metre (9.12m²)

Code

450-991



Cetco Ultraseal BT

- Two component composite membrane consisting of the BPA core layer integrally bonded to a high strength geomembrane.
- Designed for applications where the concrete has already been placed, such as backfilled foundation walls and tunnel roofs.

Size

3mm x 1.2 metre x 7.6 metre (9.12m²)

Code

450-990



Cetco Seamtape

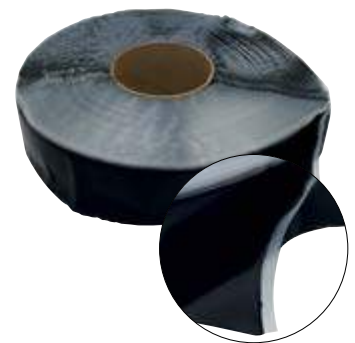
- Used to seal joints when using Volclay Ultraseal membranes.

Size

50mm x 38 metre roll

Code

711-525



JOHN NEWTON WATERPROOFING SYSTEMS

John Newton Waterproofing Systems



Established in 1848, John Newton & Company is the UK's leading independent supplier of structural waterproofing systems, water control and drainage products. Newtons offer the best BBA (British version of CSIRO) certified solutions for waterproofing and dampproofing applications in new build and refurbishment projects.

The Newton System500 is the flagship BBA approved internal waterproofing system for new build and refurbishment projects. Unlike conventional 'tanking' our cavity drain system works by placing designed maintainable depressurisation voids at known weaknesses in the structure so that ingressing water is simply captured and diverted out of the property. Newtons System500 can be installed in all weather conditions and there are no messy and costly substrate preparation works. Newton System500 is one of the easiest basement waterproofing systems to understand and specify, and it is widely recognised as the preminium drained cavity waterproofing system.

The Newton System500 has been specified and used in London Underground stations, the British Museum, Royal and Ancient Golf Club of St Andrews and the Royal Courts of Justice, to name a few.



JOHN NEWTON WATERPROOFING SYSTEMS

Newton 503 (M5)

- 3mm cavity drain membrane for basement walls, floors & vaulted soffits.
- Newton 503 is a BBA approved cavity drain waterproofing membrane suitable for use internally to retaining walls, vaulted soffits and floors.
- Newton 503 is a flexible HDPE membrane which at 0.5mm in thickness provides a low profile drainage solution.



Colour	Size	Code
Clear	3mm x 2 metre x 20 metre roll (40m ²)	350-501

Newton 503 Mesh (M11)

- 3.5mm cavity drain membrane for basement walls, floors and vaulted soffits.
- Newton 503 mesh is a BBA certified meshed membrane suitable for use as a waterproofing membrane when used below the ground as part of Newton System500.
- With its 3mm stud, Newton 503 Mesh is just 3.5mm in overall thickness and is the preferred meshed membrane where space is at a premium.
- Its meshed surface provides an excellent 'key' for lime mortars, renders, plasters and dabbed plasterboard.
- When using Newton 503 Mesh is essential to use Newton Multiplug or Newton Nuseal with waterseal rope as a means of achieving a waterproof seal.



Colour	Size	Code
Opaque	3.5mm x 2 metre x 20 metre roll (40m ²)	350-502

Newton Multiplug (A1)

- Newton Multiplug has been engineered to give a better fix in questionable substrates.
- It has the added benefit of having a rubber sealing grommet supplied with the plug. In very poor substrates a pin (available separately) is inserted into the plug that expands its outer circumference by nearly 2mm to tighten the plug into the substrate.
- The Newton Multiplug is predrilled to accept a 5mm selftapping screw for the fixing of battens or other dry-lining systems.
- 100 pieces per bag.



Colour	Size	Code
Blue/Orange	57mm x 10mm	904-200

JOHN NEWTON WATERPROOFING SYSTEMS

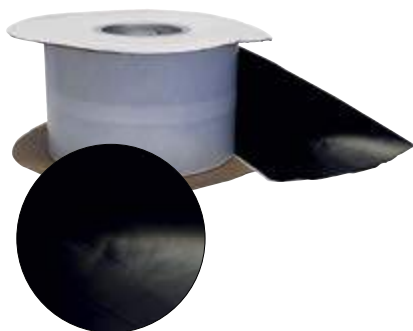
Newton Waterseal Tape



- Newton Waterseal Tape is used to form a seal at the overlap adjacent sheets of Newton membranes.
- It is placed between the flange of one sheet and the top flat surface of the next, or if the studs interlock, it can be used to seal between the flat contact area of this type of joint.

Description	Size	Code
Newton Waterseal Tape	22.5 metre x 30mm x 2.5mm	914-600

Newton Overtape



- Newton Overtape is used to create single sided taped joints, as an overtape to seal adjacent butted and overlapping membranes, or to seal above joint to the membrane created whilst shaping the membrane to fit a convoluted substrate.
- Newton Overtape can also be used for the sealing of protrusions through the substrate.

Description	Size	Code
Newton Overtape	100mm x 20 metre	914-601
Newton Overtape	150mm x 20 metre	914-612

Newton Basedrain (DI)



- Newton Basedrain comprises a range of products that receive water ingressing at weaknesses within the structure and then discharge the collected water to a sump system or safe drainage (drainage that is below the level of the basement floor that cannot back-up or block).

Description	Size	Code
Newton Basedrain (DI)	2 metre lengths	450-600



JOHN NEWTON WATERPROOFING SYSTEMS

Newton Basedrain Corner

- 90° formed corner.



Description	Size	Code
Newton Basedrain Corner	50mm x 115mm x 115mm	450-604

Newton Basedrain Adaptor

- Newton basedrain adaptor connects the Newton Basedrain system to 63mm pipe to sump or drainage.



Description	Code
Newton Basedrain Adaptor	450-602

Newton Basedrain Jointing Tape

- Used at the joint of the Newton Basedrain system.



Description	Size	Code
Newton Basedrain Jointing Tape	50 metre roll	450-606

Newton Basedrain Flexible Jetting Eye

- Newton Basedrain Flexible Jetting Eye extends to 300mm to allow easy maintenance and cleaning of draining system.



Description	Code
Newton Basedrain Flexible Jetting Eye	450-603

JOHN NEWTON WATERPROOFING SYSTEMS

Newton Basedrain T Piece



- Formed T piece, for the basedrain system.

Description

Newton Basedrain T Piece

Code

450-607

Newton Baseboard Length



- Newton Baseboard is a unique above slab drainage conduit that is designed to capture water that is entering properties via the wall/floor junction for removal to an appropriate drainage medium.

Description

Newton Baseboard Length

Size

2.4metre

Code

450-608

Newton Baseboard Corner



Outside

Inside

- Preformed corner for the baseboard system.

Description

Newton Baseboard Outside Corner

Code

450-605

Newton Baseboard Inside Corner

450-601

Newton Baseboard End Cap



- End cap for baseboard system

Description

Newton Baseboard End Cap Right

Code

450-609

Newton Baseboard End Cap Left

450-610

Newton Baseboard Connectors

450-611

ADMIXES

Krystol Internal Membrane™ (KIM®)

- Krystol Internal Membrane (KIM) is a chemical admixture in dry powdered form, effective in creating waterproof concrete.
- KIM is used in place of externally applied surface membranes to protect against moisture transmission, chemical attack and corrosion of reinforcing steel.
- When combined with fresh concrete, Kryton's unique and proven Krystol® technology reacts with un-hydrated cement particles to form millions of needle-like crystals.
- Over a period of weeks and months, these crystals grow, filling the naturally occurring pores and voids in concrete, and permanently blocking the pathways for water and waterborne contaminants. Later, if cracks form due to settling or shrinkage, incoming water triggers the crystallization process and additional crystals form, filling cracks and ensuring that the structure's waterproofing barrier is maintained and protected.
- In addition to filling the pores and capillaries of the concrete matrix with crystals, KIM enhances the natural hydration process by intensifying and prolonging the hydration of the cementing materials.
- This reduces the size and number of capillary pores within the concrete matrix, making it dramatically less porous, and improving strength and durability characteristics.



Decscription	Size	Code
Krystol Internal Membrane™ (KIM®)	5kg bag	475-202

Krystol Broadcast™

- Krystol Broadcast is a crystalline waterproofing treatment for concrete flatwork.
- Krystol Broadcast is applied as a dry-shake to the fresh concrete surface and trowelled into the concrete during the final finishing.
- The dry broadcast method produces a smooth finished floor suitable for typical traffic or application of common floor finishes.
- Krystol Broadcast replaces the need for conventional membrane waterproofing systems, and is best suited for thick concrete slabs that will be power-trowelled during finishing.
- When combined with fresh concrete, Kryton's unique and proven Krystol® technology reacts with un-hydrated cement particles to form millions of needle-like crystals.
- Over a period of weeks and months, these crystals grow, filling the naturally occurring pores and voids in concrete, and permanently blocking the pathways for water and waterborne contaminants. Later, if cracks form due to settling or shrinkage, incoming water triggers the crystallization process and additional crystals begin to grow, filling cracks and ensuring that the structure's waterproofing barrier is maintained and protected.



Decscription	Size	Code
Krystol Broadcast™	25kg	475-203

Aqua Blök™

RAPID

See RED with Rapid

- **RAPID curing:**
 - Recoat in 1 hour*
 - Tile 4 hours after final coat*
 - Rain resistant after 4 hours drying*
 - Flood test 12 hours after final coat*
- **Class III - Highly flexible**

DRY

WET



**Based on ambient temperature of 23°C and 60% RH*

CTA™

CONSTRUCTION
TECHNOLOGIES
AUSTRALIA

ctaust.com.au

